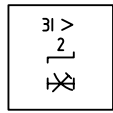
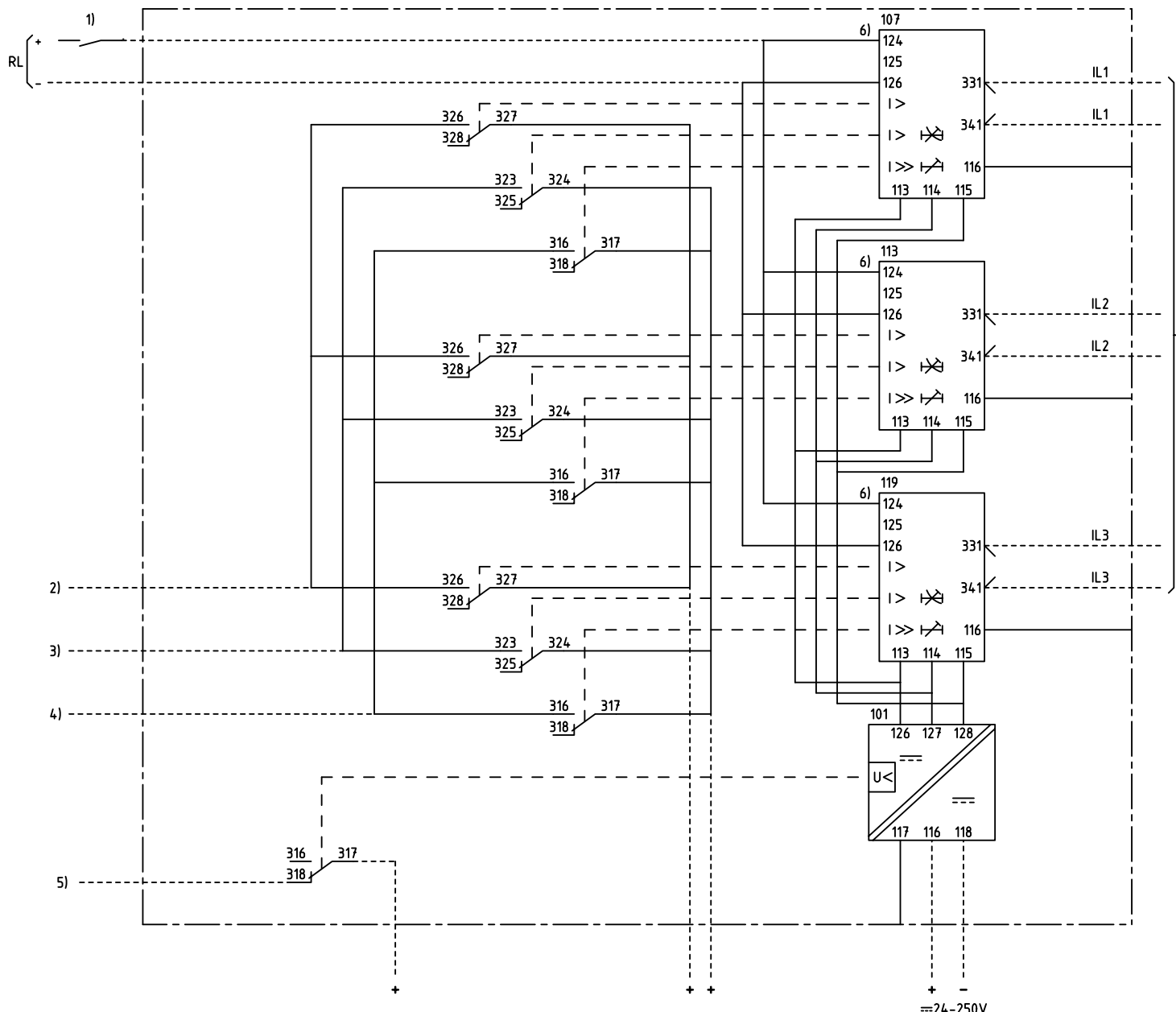
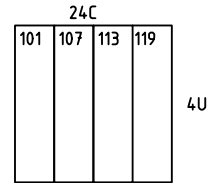


We reserve all rights in this document and in the information contained therein. Reproductions, use for other than intended purposes, or distribution without the written consent of ABB Automation Technologies AB is strictly forbidden.



3-PHASE O/C PROTECTION
3-FAS ÖVERSTRÖMSSKYDD



101 RXTUG 22H
107,113,119 RXIDK 2H

- 1) ENABLE, BLOCK OR INCREASED OP.VALUE
FRIGIVNING, BLOCKERING ELLER ÖKAT
FUNKTIONSVÄRDE
- 2) START OVERCURRENT
START ÖVERSTRÖM
- 3) LOW SET STAGE, TRIPPING
LÅGSTRÖMSSTEG, UTLÖSNING
- 4) HIGH SET STAGE, TRIPPING
HÖGSTRÖMSSTEG, UTLÖSNING
- 5) LOSS OF AUXILIARY VOLTAGE
BORTFALL AV HJÄLPSPÄNNING
- 6) CONNECTED FOR RL=110-220V DC
CHANGE FROM 124 TO 125
AT RL=48-60V DC
KOPPLAD FÖR RL=110-220V DC
ÄNDRA FRÅN 124 TO 125
VID RL=48-60V DC

Customer drw no	Prep. PTUA/ TPTD Eriksson Jill 2000-10-18	Circuit Diagram	Cont. sh/ No of sh
	Appr. PTUA/ TATD Karlsson Roger 2000-10-24		
	Resp. dept PTUA/ TPTD	Document number	Sheet
Based on	ABB ABB Automation Technologies	1MRK001003-YA	1
		Lang. 82	Rev. A

Document status: Approved