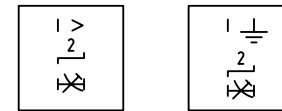
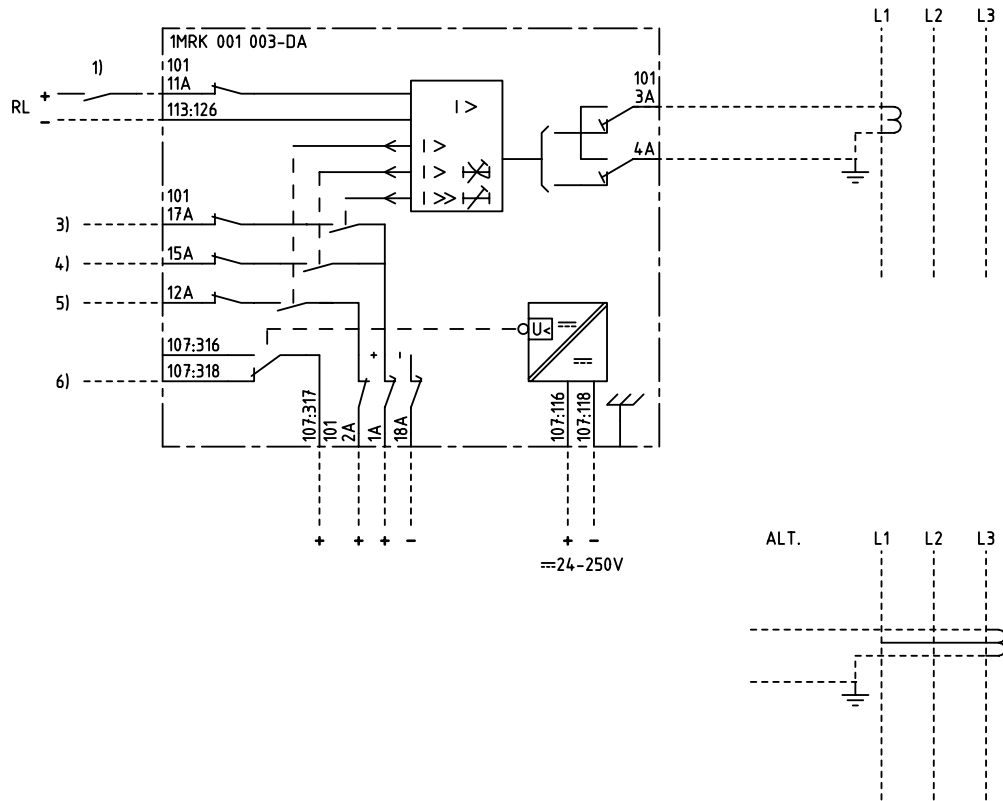


We reserve all rights in this document and in the information contained therein. Reproduction, use for other than intended purposes, or distribution without the written permission of ABB Network Partner AB is strictly forbidden.



1-PHASE OVERCURRENT PROTECTION OR
 EARTH-FAULT PROTECTION
 1-FAS ÖVERSTRÖMS- ELLER JORDFELSSKYDD

1) ENABLE, BLOCK OR INCREASED OP.VALUE
 FRIGIVNING, BLOCKERING ELLER ÖKAT
 FUNKTIONSVÄRDE

3) HIGH SET STAGE, TRIPPING
 HÖGSTRÖMSSTEG, UTLÖSNING

4) LOW SET STAGE, TRIPPING
 LÅGSTRÖMSSTEG, UTLÖSNING

5) LOW SET STAGE, START
 LÅGSTRÖMSSTEG, START

6) LOSS OF AUXILIARY VOLTAGE
 BORTFALL AV HJÄLPSPÄNNING

ELCAD ID PAT/render

DATE 2004-06-231:53

Issued in ARCADE

Prepared 96-05-03 H RAZA/J ERIKSSON		TERMINAL DIAGRAM/UTTAGSSCHEMA		Resp dep PAT Rev ind -		Lang 82	
Approved 96-06-19 P JENÄKER		RAIDK 1 OVERCURRENT PROTECTION		Lang 82		Sheet 1	
RAIDK 1 ÖVERSTRÖMSKYDD		ABB Network Partner AB		1MRK 001 003-DAA		Cont	
Rev Ind	Revision	Reg No 7411					
Based on		Pcl 890 474					