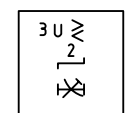
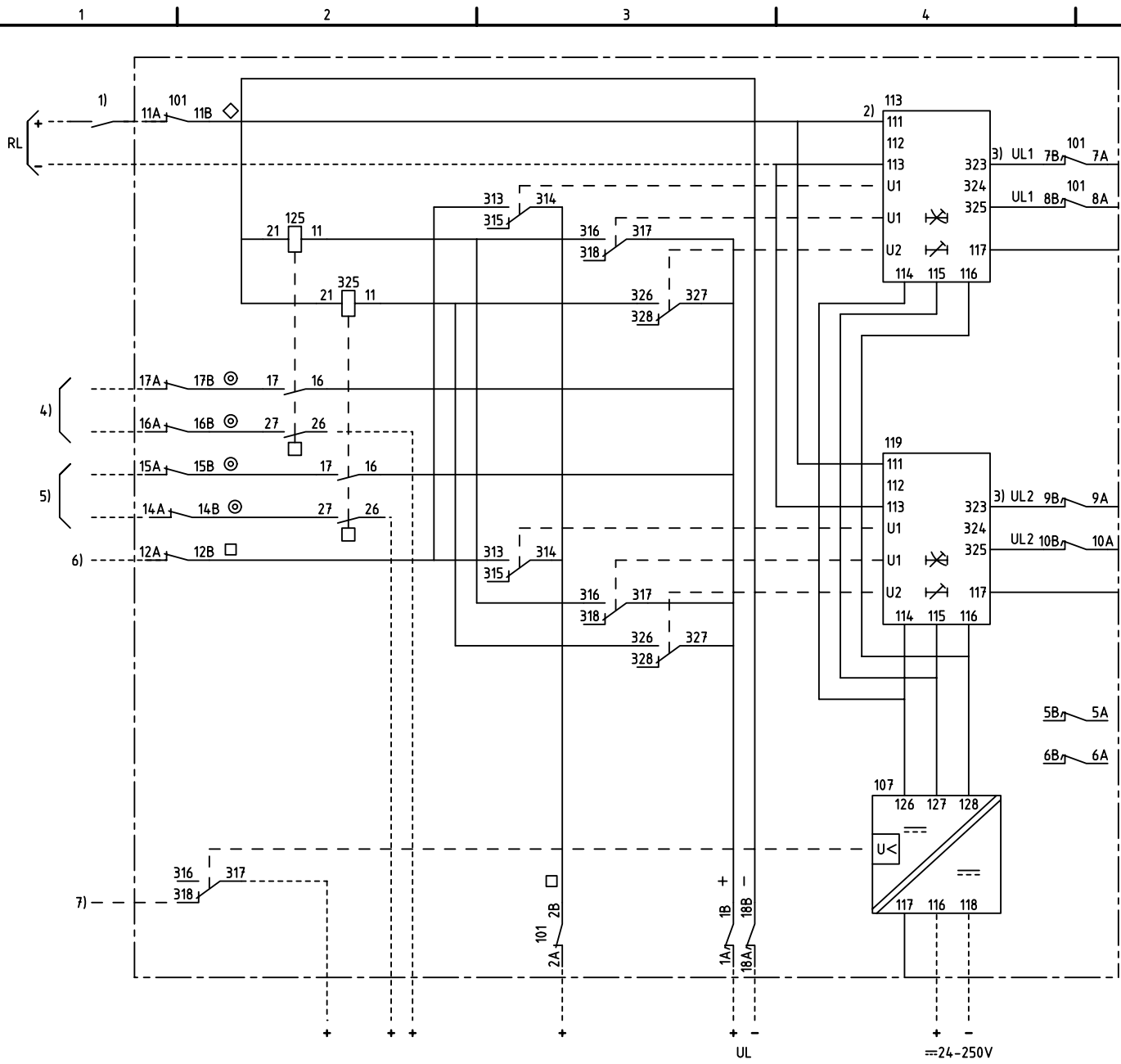
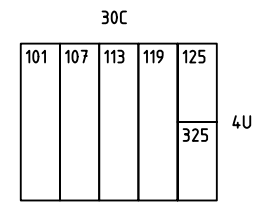


We reserve all rights in this document and in the information contained therein. Reproductions, use for other than intended purposes or in any other way is strictly forbidden. © ABB Network Partner AB



2-PHASE OVER/UNDERVOLTAGE PROTECTION
 2-FAS SPÄNNINGSSTEGRINGS- /UNDERSPÄNNINGS-
 SKYDD



- 101 RTXP 18
- 107 RXTUG 22H
- 113,119 RXEDK 2H
- 125,325 RXME 18

- 1) RESETTING OF INDICATION
ÅTERSTÄLLNING AV INDIKERING
- 2) CONNECTED FOR RL= 110-220V DC
CHANGE FROM 111 TO 112 AT RL=48-60V DC
KOPPLAD FÖR RL=110-220V DC
ÄNDRA FRÅN 111 TILL 112 VID RL=48-60V DC
- 3) CONNECTED FOR THE HIGHER UR
CHANGE FROM 323 TO 324 FOR THE LOWER UR
KOPPLAD FÖR DEN HÖGRE UR
ÄNDRA FRÅN 323 TILL 324 DEN LÄGRE UR
- 4) TRIPPING STAGE 1
UTLÖSNING STEG 1
- 5) TRIPPING STAGE 2
UTLÖSNING STEG 2
- 6) START STAGE 1
START STEG 1
- 7) LOSS OF AUXILIARY VOLTAGE
BORTFALL AV HJÄLPSPÄNNING

ELCAD ID PS/render		DATE 2004-06-2220:31		1MRK 001 013-LA		Issued in ARCADE	
		Prepared 96-03-11 H RAZA		CIRCUIT DIAGRAM/KRETSSCHEMA			
		Approved 96-04-17 P JENÄKER		RAEDK 2 VOLTAGE PROTECTION			
				RAEDK 2 SPÄNNINGSSKYDD		Resp dep PS Rev ind 2 98-11-09 Lang 82	
Rev Ind	Revision	Reg No	7411	ABB ABB Network Partner AB		1MRK 001 014-LA	
Based on		Pcl	890 461				
						Cont	