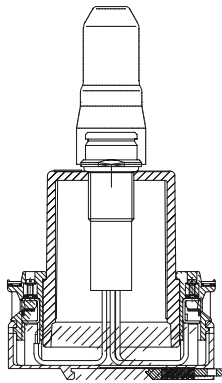




BI912S/BI913S Plug connection for bus coupling



SEKOPIA

Advantages

- identical sleeve for all plugs
- no feedback, connection tolerant to short-circuit and open loop
- 1.5 MBit/s
- Ex variants
- direct connection of Profibus DP V1 Slave
- creates open and highly flexible tree structures
- spurs are possible
- replacement of participants and extensions during bus operation
- generates RS485 EEx i (PNO standard) segment
- repeater function

Description

SEKOPIA is an innovative plug and socket connector pointing to completely new directions in Ex bus technology. Contact-free and signal enhancing, it is used in applications in PROFIBUS-DP networks.

SEKOPIA consists of a socket and a plug. The data are transmitted optically, the power is transmitted inductively. The plug generates a new bus segment and provides a supply voltage.

SEKOPIA allows the RS485 to be branched and extended. In this way, the typical RS485 line structure is changed into an open and flexible tree structure. Spurs are also possible. During active operation of the bus, subsequent participants can be connected to or disconnected from the higher ranking network without feedback and tolerant to open loop and short circuit..

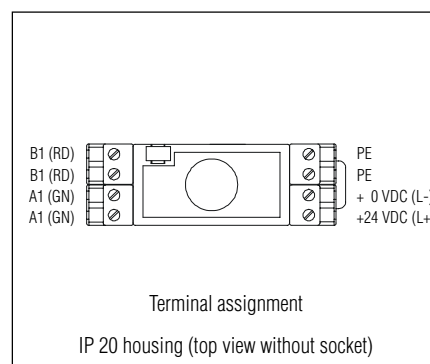
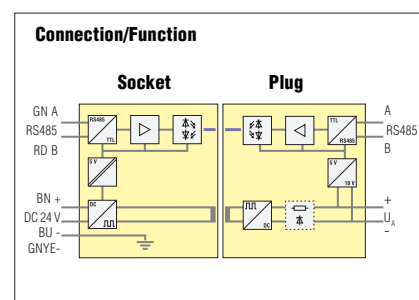
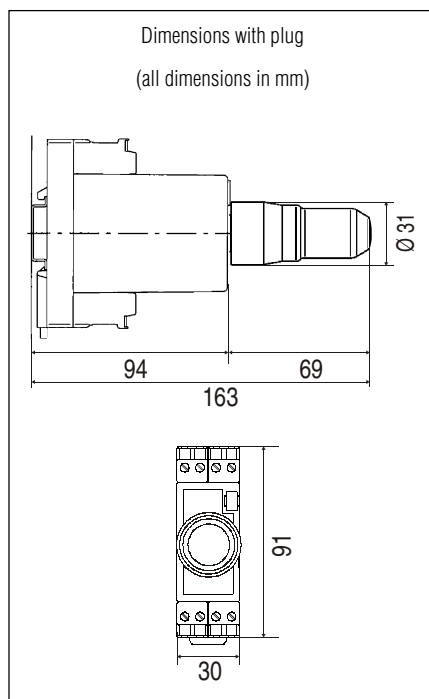
- plug EEx i, always active bus termination
- socket without or with active bus termination

Installation

SEKOPIA consists of a plug and a socket. The sockets are screwed into a housing with IP20 rating. In the housing, the connection lines are led via terminals to the bus, 24 V and PE. The plugs are connected via QUICKON® to the cables connecting to the participants. They can now be inserted into the sockets. When the socket is connected, the plug is operating. There is no need for further setting or parameterisation.

Ex note

- Combine the socket with any of the plugs.
- Socket only in EEx e housings with EEx e terminals (EN 50 014/EN 50 019).
- Assemble plug appliance in such a way that the possibility of mechanical damage is minimal.
- When connecting the plug cable screw the plastic housing to its limit.
- Unused plugs and sockets are to be protected using the protective caps supplied.
- Plugs and sockets are to be used and installed in such a way that internal condensation or moisture absorption will not occur.



Technical data

Communication	RS485/RS485
Baud rate	max. 1.5 MBit/s
Socket supply	DC 20 to 30 V/100 mA
Bus termination	plug always active socket with termination available
Output voltage	U _a for transmitter supply dependent on application
Ambient temperature	- 20 °C to + 40 °C
IP rating	IP 20 / IEC 529
Enclosure	thermoplastic/metal
Mounting	Din-Rail TS 35 x 7,5 (15) acc. to DIN EN 50022
Housing distance	Intrinsically safe to non-intrinsically safe terminals minimum 50 mm
Housing connection	terminals 2,5 mm ² fine wire
Plug connection	spring latch connector/ QUICKON®
Connection leads	ø 6.0 to 7.5 mm (see leads list)
Connection	snap-on into socket
Release	release ring
Guidelines/norms/ certifications	NAMUR recommendation 89/336/EMC Ex directive 94/9/EC

Explosion protection

Approvals	KEMA 01 ATEX 2001X PTB 97 ATEX 1068 U CE0032
IP20 housing	
Ex protection type	Ex II 2G EEx de IIC M 2 EEx de I

Socket	
Ex protection type	Ex II 2G EEx M II T4
Plug EEx i	
Ex protection type	Ex II 2(1)G EEx m [ia] IIC T4

Supply output	U ₀ = 10,5 V I ₀ = 284 mA P ₀ = 0,75 W
RS485	U ₀ = 4,1 V I ₀ = 144 mA P ₀ = 0,15 W
Supply output and RS485	U ₀ = 10,5 V I ₀ = 428 mA P ₀ = 0,9 W

C and L values see conformity certificate

Order No.

Socket Standard/Plug EEx i **BI912S**

(Bartec-No. 17-21S1-B111/S111/07-7311-63)

Socket with active bus termination/
Plug EEx i **BI913S**

(Bartec-No. 17-21S1-B112/S111/07-7311-63)