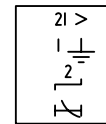
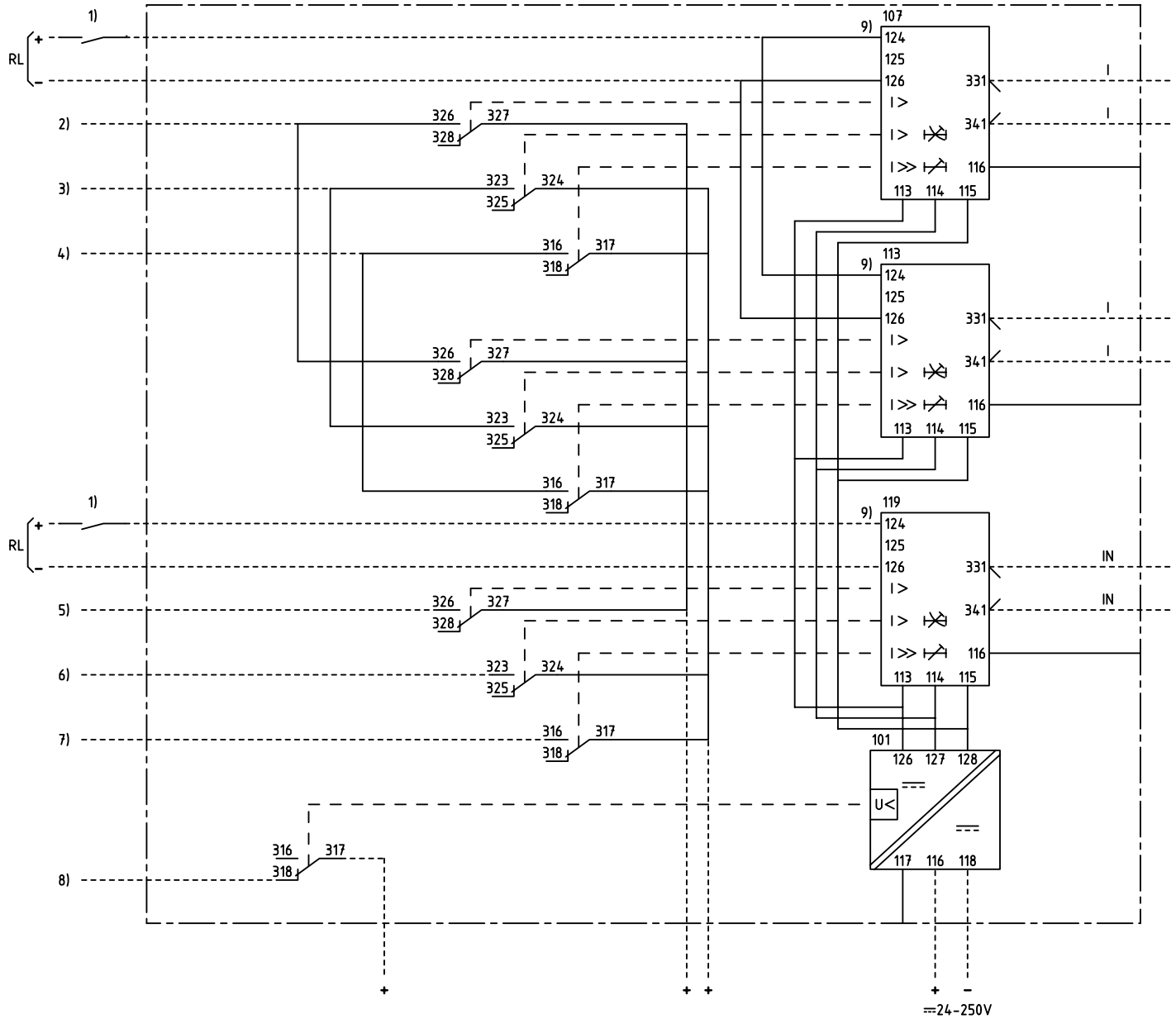
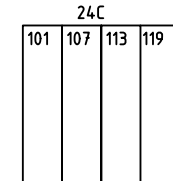


We reserve all rights in this document and in the information contained therein. Reproduction, use for other purposes or distribution without the written consent of ABB Automation Technologies AB is strictly forbidden.



2-PHASE OVERCURRENT AND EARTH-FAULT PROTECTION

2-FAS ÖVERSTRÖMS- OCH JORDFELSSKYDD



101 RXTUG 22H
107,113,119 RXIDK 2H

- 1) ENABLE, BLOCK OR INCREASED OP. VALUE
FRIGIVNING, BLOCKERING ELLER ÖKAT
FUNKTIONSVÄRDE
- 2) START OVERCURRENT
START ÖVERSTRÖM
- 3) LOW SET STAGE, TRIPPING
LÅGSTRÖMSSTEG, UTLÖSNING
- 4) HIGH SET STAGE, TRIPPING
HÖGSTRÖMSSTEG, UTLÖSNING
- 5) START EARTH-FAULT
START JORDFEL
- 6) LOW SET STAGE, EARTH-FAULT TRIPPING
LÅGSTRÖMSSTEG, JORDFEL UTLÖSNING
- 7) HIGH SET STAGE, EARTH-FAULT TRIPPING
HÖGSTRÖMSSTEG, JORDFEL UTLÖSNING
- 8) LOSS OF AUXILIARY VOLTAGE
BORTFALL AV HJÄLPSPÄNNING
- 9) CONNECTED FOR RL=110-220V DC
CHANGE FROM 124 TO 125
AT RL=48-60V DC

KOPPLAD FÖR RL=110-220V DC
ÄNDRA FRÅN 124 TO 125
VID RL=48-60V DC

Customer drw no	Prep. PTUA/ TPTD Eriksson Jill 2000-10-18	Circuit Diagram RAIDK 3 OVERCURRENT PROTECTION	Conf. sh/ No of sh
	Appr. PTUA/ TATD Karlsson Roger 2000-10-24		
	Resp. dept PTUA/ TPTD		
Based on	ABB ABB Automation Technologies	Document number 1MRK001003-YB	Lang. 82
			Rev. A
			Sheet 1

Document status: Approved