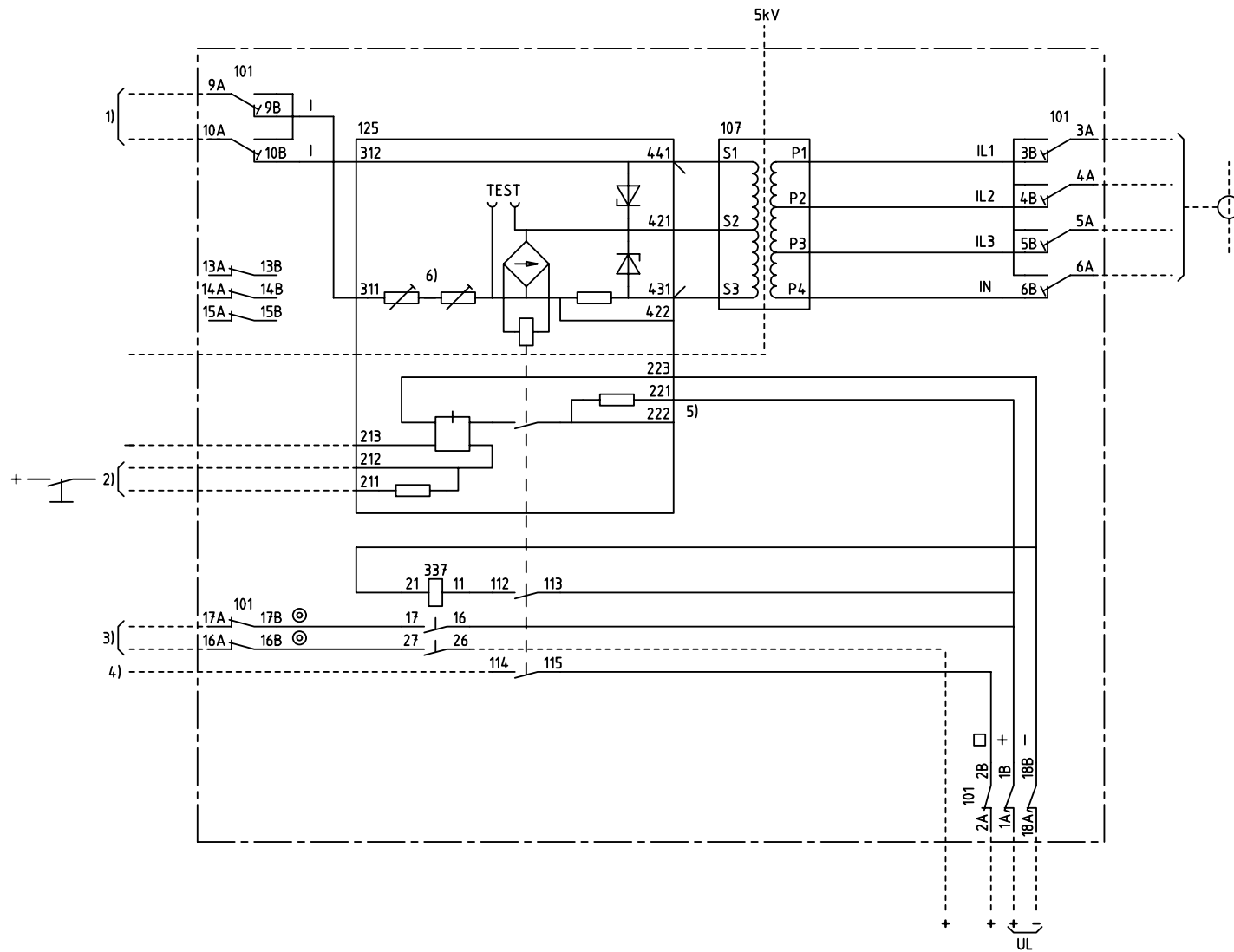


We reserve all rights in this document and in the information contained therein. Reproductions, use for other than intended purposes, or distribution without the written consent of ABB Automation Technologies AB is strictly forbidden.



$$I_d >$$

PILOT-WIRE DIFFERENTIAL PROTECTION
LÄNGSDIFFERENTIALSKYDD

42C			
101	107	125	4U
		337	

- 101 RXP 18
- 107 TRANSFORMER UNIT
TRANSFORMATORENHET
- 125 RXDHL 4
- 337 RXME 1

- 1) PILOT-WIRES
HJÄLPTRÅDAR
- 2) RESETTING
AT 110-150 V DC CONNECT TO 211
AT 24-55 V DC CONNECT TO 212
ÅTERSTÄLLNING
VID 110-250 V DC ANSLUT TILL 211
VID 24-55 V DC ANSLUT TILL 212
- 3) TRIPPING ETC.
UTLÖSNING M.M.
- 4) ALARM ETC.
SIGNAL M.M.
- 5) CONNECTED FOR UL=110-250 V DC
CHANGED FROM 221 TO 222 AT
UL=24-55 V DC
KOPPLAD FÖR UL=110-250 V DC
ÄNDRA FRÅN 221 TILL 222 VID
UL=24-55 V DC
- 6) DELIVERY SETTING 266 OHM
LEVERANSINSTÄLLNING 266 OHM

Customer drw no	Prep. PTUA/ TPTD Eriksson Jill 2000-10-31	RK 612 001-GA		Cont. sh/ No of sh	
	Appr. PTUA/ TATD Karlsson Roger 2000-11-08	Circuit Diagram Differential protection			
	Resp. dept PTUA/ TPTD	Document number	Lang.	Rev.	Sheet
Based on	ABB ABB Automation Technologies	7434209-GA	82	B	1

Document status: Approved