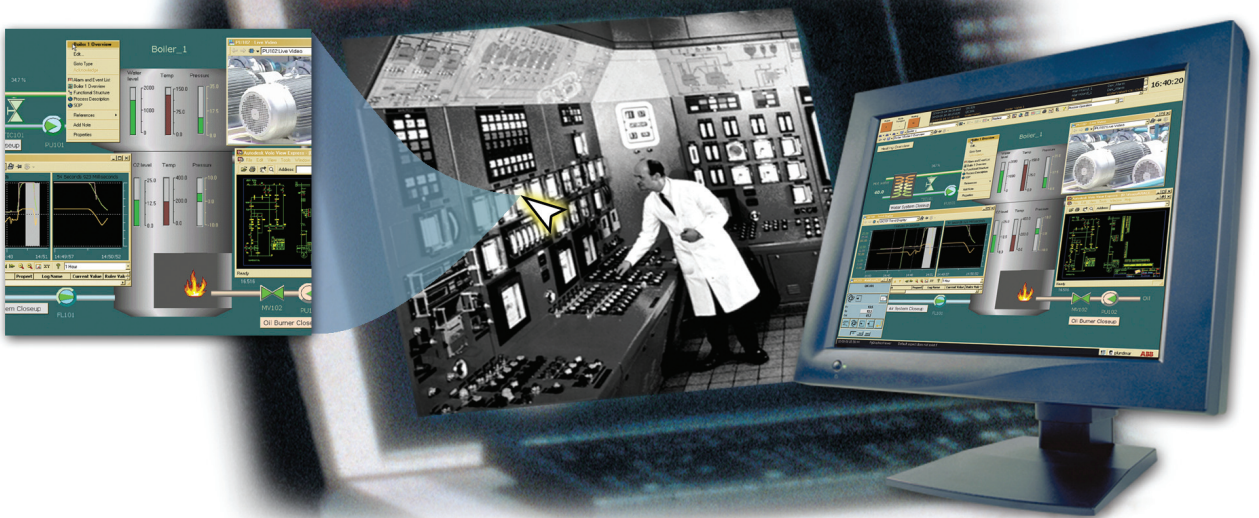


Systems Evolution from ABB



A Great Future without forgetting the Past

Keeping up in this world of rapidly changing technology can be risky and expensive. But not keeping up can be riskier. The key lies in choosing a partner who understands the risks — and turns them to your advantage.

ABB's status as the world's largest control system provider comes from respecting these factors. Our industry-leading Industrial^{IT} technology, proven evolution programs and tools, and unparalleled support track record make ABB a clear choice for thousands of users. While other suppliers promote migration, the end result is too often just "rip and replace."

Use what
you have
to get what
you need.

We'll show you how to keep the best pieces of your installed investment . . . and make them stronger.

ABB recognizes that maximizing return on investment is key. We're committed to control systems that deliver real results to your business today — and can be enhanced through Industrial^{IT} for additional results tomorrow. We understand that true system integration has but one goal: to help you improve your productivity.

As the original OEM provider, ABB is the only control system partner who can help you leverage the past to ensure a stronger future. No fluff, no marketing hype, but real, tangible results.

We have the track record to prove it:



"ABB's commitment to our future here at Polimeri-Europa is something we trust in. We've seen that they're coming out with several new lines of products to connect to the system we have now, and we're looking forward to moving on with ABB."

Rob Saunders, Process Engineer,
Polimeri-Europa, Baytown, Texas

For more information on ABB's industry-leading evolution programs, call us at 1-800-HELP-365, or 1-440-585-7804, option #6.

Visit our Evolution web site at www.abb.com/controlsystems

ABB