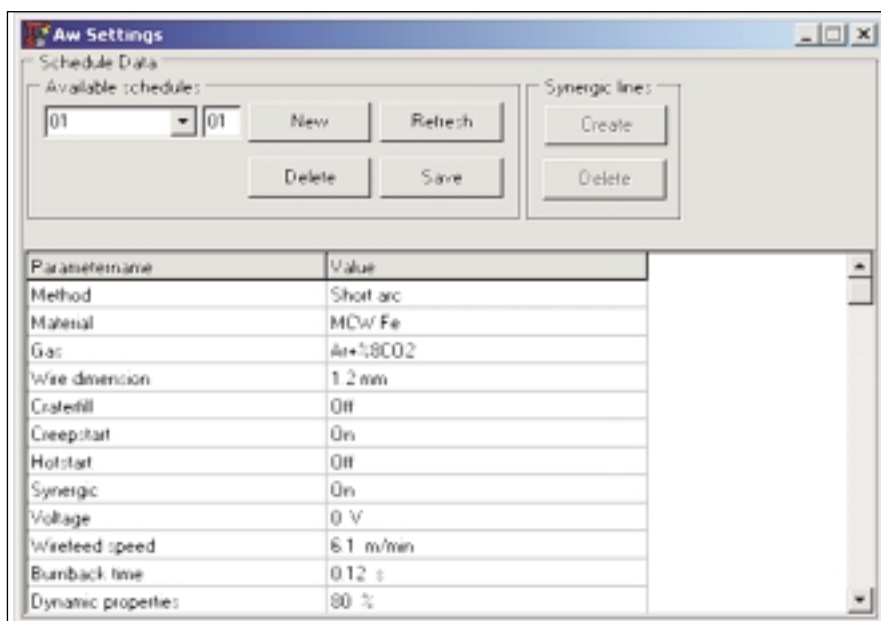


CANAssist

Arc Welding Software



CANAssist is a tool for logging CAN-bus traffic between the robot, power source and PIB in an ARCITEC station and for enabling control of the power source and PIB without the robot.

For this purpose the program is divided into two modes, Listener and Master mode. In Listener mode only CAN-bus traffic logging is performed. In Master mode CANAssist has the ability to control the PIB and power source. In Master mode the robot must not be connected to the power source and PIB, and as there is no contact between the robot, power source and PIB it is not possible to combine ordinary robot welding with CANAssist in this mode.

Functionality available in listener mode:

- CAN bus message logging to window and to file.
- Sending "user created" CAN bus messages (Manual CANMessages)
- Display of:
 - I/O settings
 - I/O signals

Functionality available in master mode:

Same as above and also possibility to:

- Edit available welding schedules in the power source
- Adding and deleting welding schedules
- Saving contents of a schedule to text file (for reading only).
- Toggling the state of I/O signals in PIB.
- Use service functions.
- Creating/deleting synergic lines.
- Changing I/O parameter values in PIB.

www.abb.com/robotics

ABB reserves the right to change specifications without notice.

SE-695 82 Laxå Sweden, Tel +46 584 820 00, Fax +46 584 131 80

