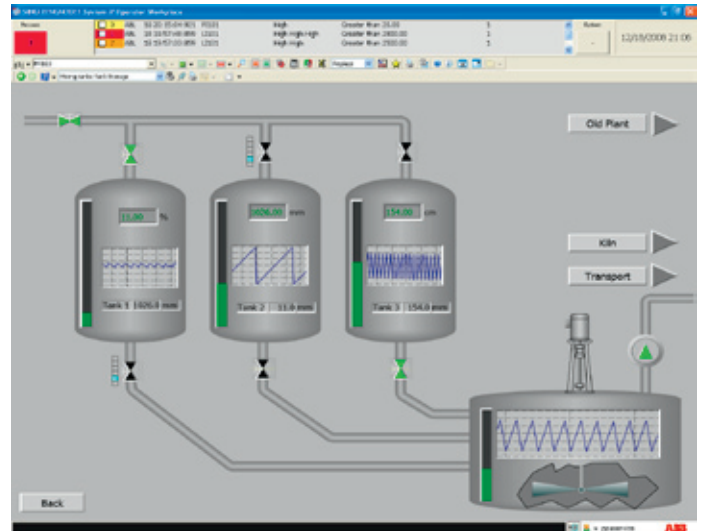


# New Process Graphics in System 800xA

System 800xA features a new enhanced Process Graphics package based on the latest Windows technology. Simple and intuitive, this new package – Process Graphics 2 (PG2) – features a state-of-the-art graphics builder that promotes faster engineering and more efficient use. New Process Graphics 2 works in parallel with previous Visual Basic based graphics. Converting previous System 800xA graphic displays to PG2 is swift and secure.



Converting to Process Graphics 2 with the migration tool takes only a few seconds. The result is true-vector graphics – fully scalable with no distortion or loss of resolution.

## Process graphics based on the latest technology

Together with the object-orientated architecture of System 800xA, process graphics play a key role in helping plant operators work efficiently, act quickly and make correct decisions. It's not uncommon to find between 200 and 300 graphic displays describing a typical facility.

The new version of ABB's System 800xA (System 5.0 service pack 2) now includes an enhanced Process Graphics package based on .Net and WPF (Windows Presentation Foundation), which is the latest Microsoft graphics technology.

Future versions of System 800xA will, however, continue to support graphics created earlier. Operators can, therefore, continue to use current graphics without any problem, and run both formats in parallel should they choose to add new graphics created with PG2.

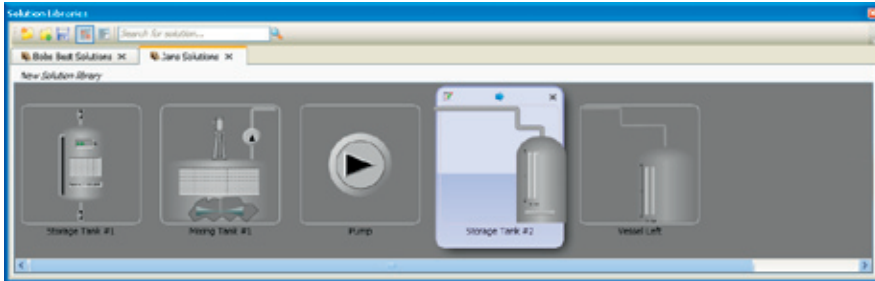
## Benefits

Process Graphics has a faster and more effective graphics builder. Highlights include a user-friendly expression editor and Display Documentation tools for keeping a record of all engineered graphics. Other benefits include full-vector graphics, more effective use of graphics cards, and built-in animation support (see Modern technology improvements). The quick and simple conversion of previous process graphics to PG 2 is naturally a major benefit.

## Faster and more cost-effective graphics builder

Many new and intuitive functions make building graphics with Process Graphics 2 up to 50% quicker and more cost-effective than with the previous process graphics package.

To save a PG2 graphic solution for reuse later in a new solution, just drag and drop it in your own personal solution library. You can easily see exactly what your library contains. When you want to use the solution again, simply drag the element from your library and drop it in its intended location. PG2 allows you to create and store any number of personalized solution libraries. A smart find-and-replace function speeds up routine graphic building tasks even further.



Example of a PG2 Solution Library. You build up a library by dragging a created graphic solution to it. When you need to use the graphic again, simply drag the element from your library and drop it in its new location. You can create any number of personal solution libraries.

### Improved expression editor

The PG2 expression editor is improved and very easy to use. Expressions are created using a simple and intuitive syntax. Copy and paste is straightforward.

### Improved documentation of process graphics

Process Graphics 2 offers a simple solution for creating a permanent record of every process graphic created. Its Display Documentation tool takes a snapshot of any engineered graphic and converts all its details to a standard Excel file. Simply click on this file to view a full list of all included objects and references.

### Modern technology improvements

Process Graphics 2 features a host of modern technology improvements. For example, full-vector graphics now enable distortion-free scaling with maintained resolution. This improvement will be especially appreciated when reducing image size to fit several graphic windows on one display screen.

More effective use is also made of the PC's graphics card, which reduces the burden on the main CPU and RAM memory.

Finally, PG2 features better support for animations by boosting the speed at which they are built while at the same time simplifying the creative process.

### Quick and simple conversion

System 800xA with Process Graphics 2 contains a migration tool for converting previous process graphics to the new format. Using this tool is simple. Just select the graphic aspect to convert and click Convert. The swift and secure conversion to PG2 takes only a few seconds. The result is better image quality with true vector graphics.

For more information please contact:

#### ABB

Process Automation Division  
Västerås, Sweden  
Phone: +46 (0) 21 32 50 00  
Fax: +46 (0) 21 13 78 45  
E-Mail: [processautomation@se.abb.com](mailto:processautomation@se.abb.com)  
[www.abb.com/controlsystems](http://www.abb.com/controlsystems)

#### ABB

Process Automation Division  
Singapore  
Phone: +65 6776 5711  
Fax: +65 6778 0222  
E-Mail: [processautomation@sg.abb.com](mailto:processautomation@sg.abb.com)  
[www.abb.com/controlsystems](http://www.abb.com/controlsystems)

#### ABB

Process Automation Division  
Wickliffe, Ohio, USA  
Phone: +1 440 585 8500  
Fax: +1 440 585 8756  
E-Mail: [industrialitsolutions@us.abb.com](mailto:industrialitsolutions@us.abb.com)  
[www.abb.com/controlsystems](http://www.abb.com/controlsystems)

#### ABB

Process Automation Division  
Mannheim, Germany  
Phone: +49 (0) 1805 26 67 76  
Fax: +49 (0) 1805 77 63 29  
E-Mail: [marketing.control-products@de.abb.com](mailto:marketing.control-products@de.abb.com)  
[www.abb.de/controlsystems](http://www.abb.de/controlsystems)