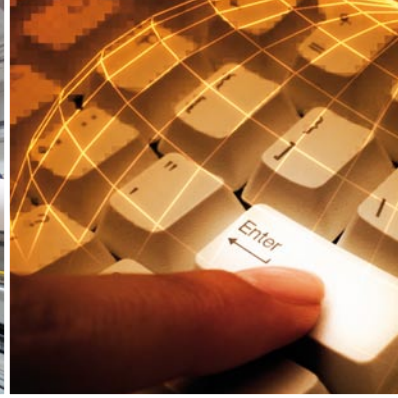


Decision Support System – DSS800

Powerful production analytics system





Decision Support System – DSS800

What is DSS800?

DSS800 is a powerful system for analyzing and reporting production, consolidating production reporting into one system. It consists of a data warehouse and reporting portal.

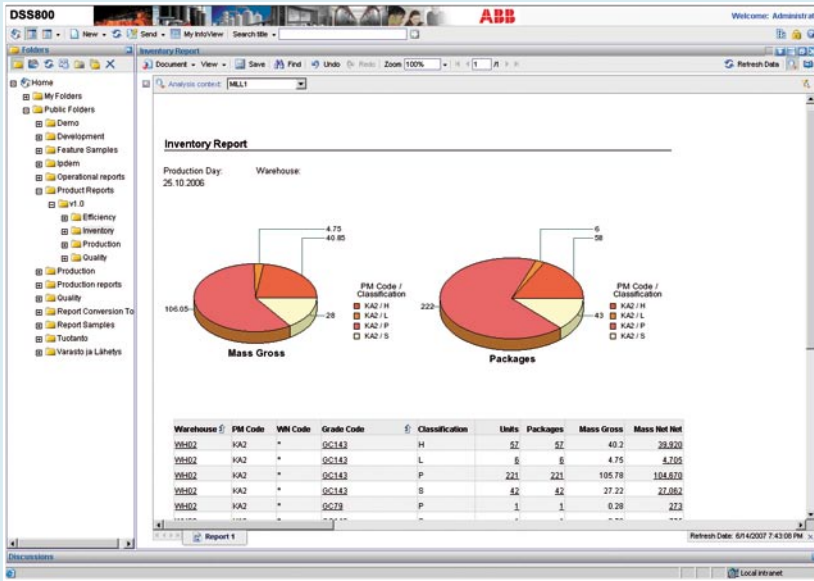
The system helps to improve mill performance by providing the right industry standard performance metrics for top-level analyses, combined with the complete transparency of the entire production process. Information access is easy. It is fully web-based using modern Business Intelligence and reporting tools.

Features

- The system contains fully web-based reporting features including analytical and ad hoc reporting
- Unique flexibility in combining data from different sources for in-depth analysis of production processes and the analysis of performance and production processes
- Plug and play interface to ABB CPM product suite
- Standardized interface to third party CPM and other systems
- Productized data model, including industry-standard performance metrics (Zellcheming Merkblatt III / 2004)
- Pre-configured reports
- Easy-to-use efficient ad hoc reporting tool

Platform independent

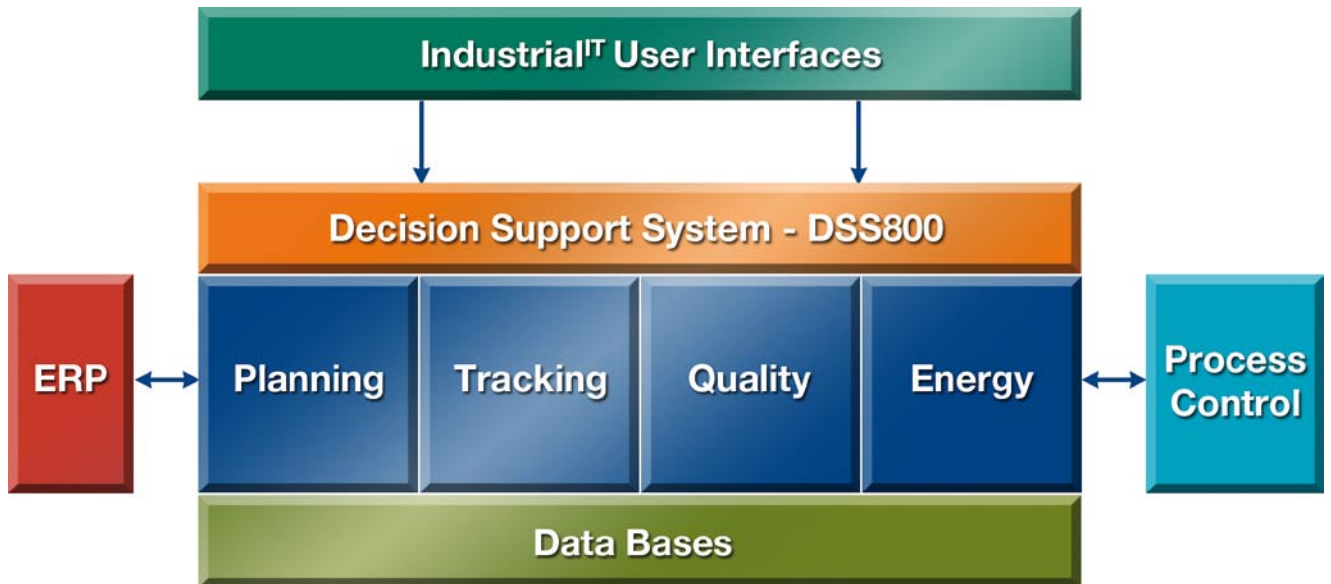
- Microsoft Windows
- Unix
- Linux



Applications

DSS800 has several usage areas in a corporate or mill environment.

- A corporate or mill manager can use the system to obtain an overall picture of the entire production process. This overview can include several aspects of the production process, ranging from production to inventories and quality metrics.
- Managers can use the system to analyze production efficiently and in detail. Tools such as drilling, slicing and dicing quickly reveal the root causes of emerging problems.
- Process developers can use the data trending and benchmarking features for analysis, generating continuous improvement.
- Financial managers can easily obtain figures for reporting without the extensive manual work traditionally involved.
- DSS800 is also an efficient gateway to other corporate level systems, presenting users with a single, clear and truthful picture of production, thereby simplifying corporate reporting. The system has an open interface to third party systems and has been SAP certified (Certified for SAP NetWeaver, Powered by SAP NetWeaver).



Benefits

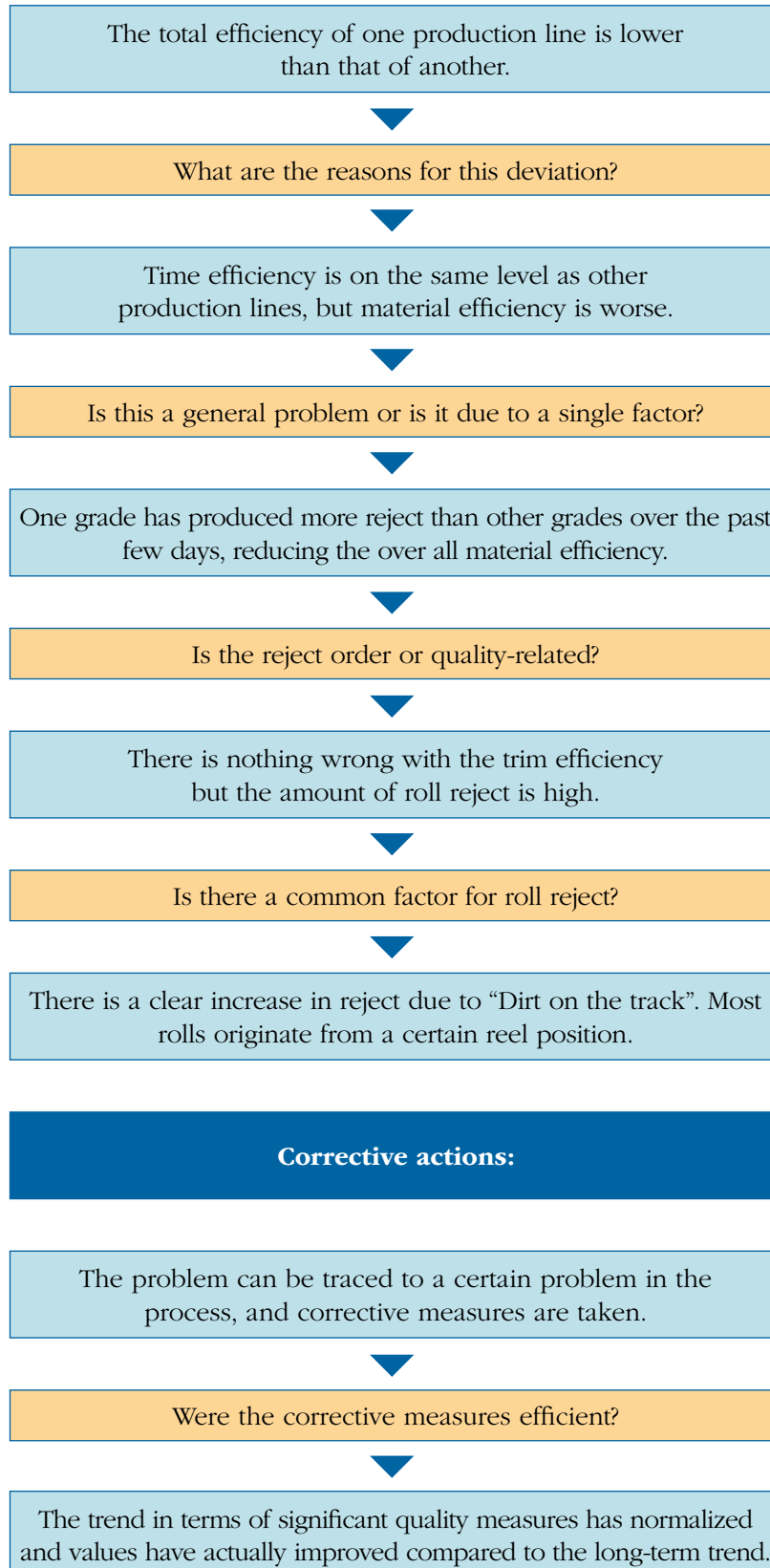
Improved mill performance

- Time savings
 - Reduced reaction time. Problem areas are detected and isolated quickly
 - Quick and visual follow-up
- Increased transparency
 - Easy benchmarking
 - Helps identify best practices and targets for development
- Continuous performance improvement
 - Efficient follow-up reporting
 - Industry-standard performance metrics
- On-line strategy follow-up
 - DSS can be used for Balanced Score Card metrics follow-ups

Reduced Total Cost of Ownership

- Productized solution
 - Fast implementation
 - Full life cycle product support
- Full vertical integration – One system for reporting
 - Superior accessibility – intranet, ABB CPM suite, ERP/SAP integration
 - Multiple data sources – from automation to ERP

Typical use case in production



**ABB Oy**

Process Industry
P.O.Box 94
FI-00381 Helsinki
Finland
Telephone +358 10 22 11
Fax +358 10 22 24503

ABB Automation Systems AB

S-721 67 Västerås
Sweden
Telephone +46 21 34 00 00
Fax +46 21 14 62 51

ABB Automation GmbH

Papier & Zellstoff
Kallstadter Strasse 1
D-68309 Mannheim
Germany
Telephone +49 (0)621 381-1507
Fax +49 (0)621 381-1615

ABB Inc.

579 Executive Campus Drive
Westerville, Ohio 43082
U.S.A.
Telephone +1 614 818 6300
Fax +1 614 818 6570

ABB Industry Pte Ltd.

No. 2 Ayer Rajah Crescent
Singapore 139935
Singapore
Telephone +65 775 2622
Fax +65 779 1206