

June 2009

The complete offer Enclosed switch-disconnectors / Isolators

Contents

- Why use enclosed switch-disconnectors
- Applications and application demands
- The ABB products and features
- Technical documentation
- Conclusion

[Link to flash-plugin](#)

Why use enclosed switch-disconnectors



- Local isolation
- Main switch
- Control switch
- Fireman switch
- Etc.

Why use enclosed switch-disconnectors



Personal safety

- Maintenance isolation
- Electrical isolation

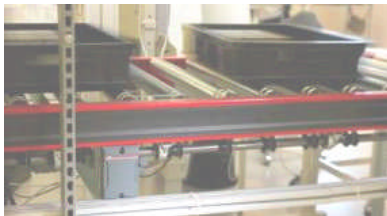
Safety standards

- Machine Directive EN60204

Definitions

Machine Directive
EN60204

Where to find the applications



- Air conditioners / chillers
- Elevators
- Ventilation fans
- Lighting
- Corn drier
- Conveyor belts
- Car washing machines
- Washing machines
- Restaurant kitchens
- Electrical distribution systems

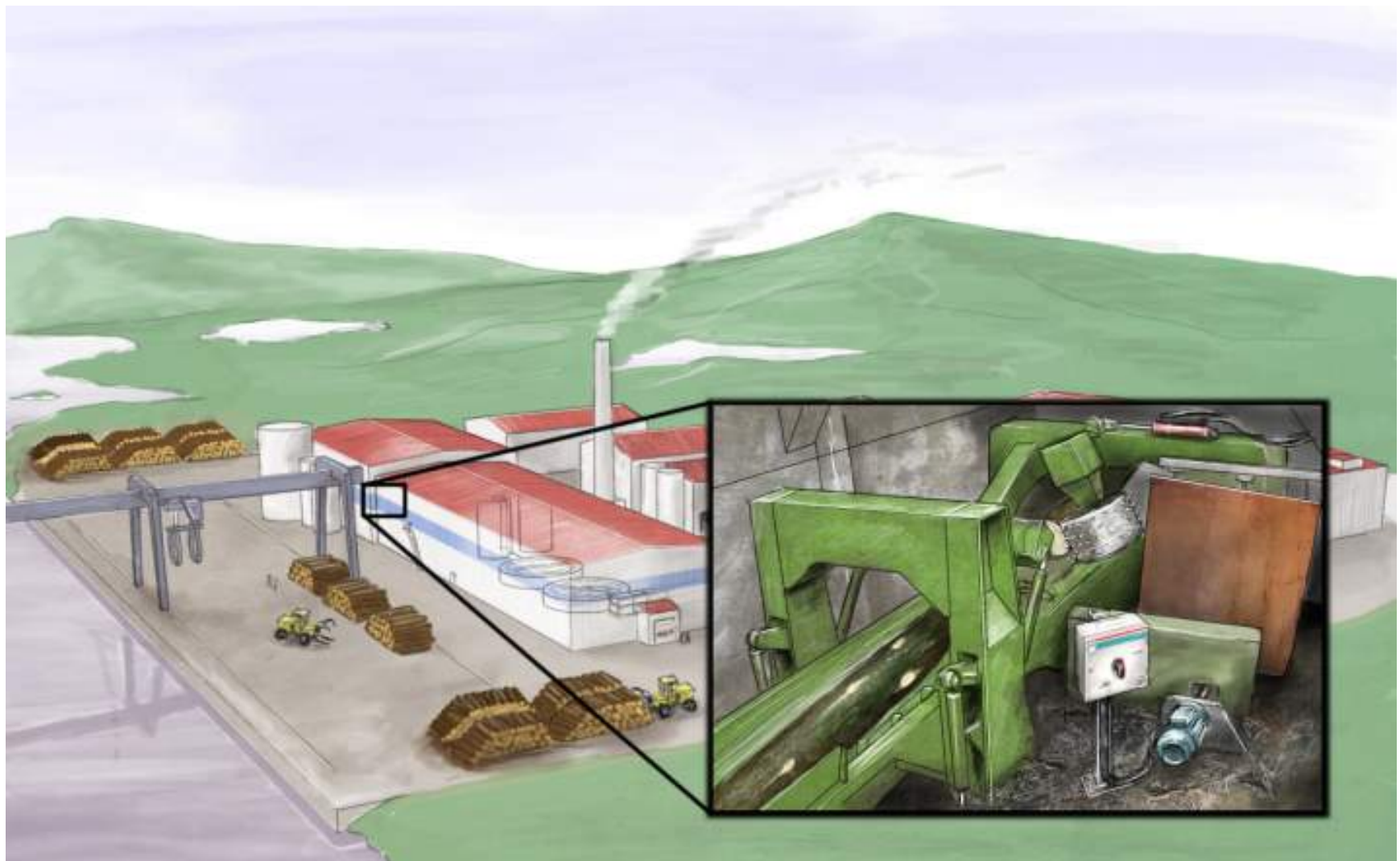
Example of industrial application



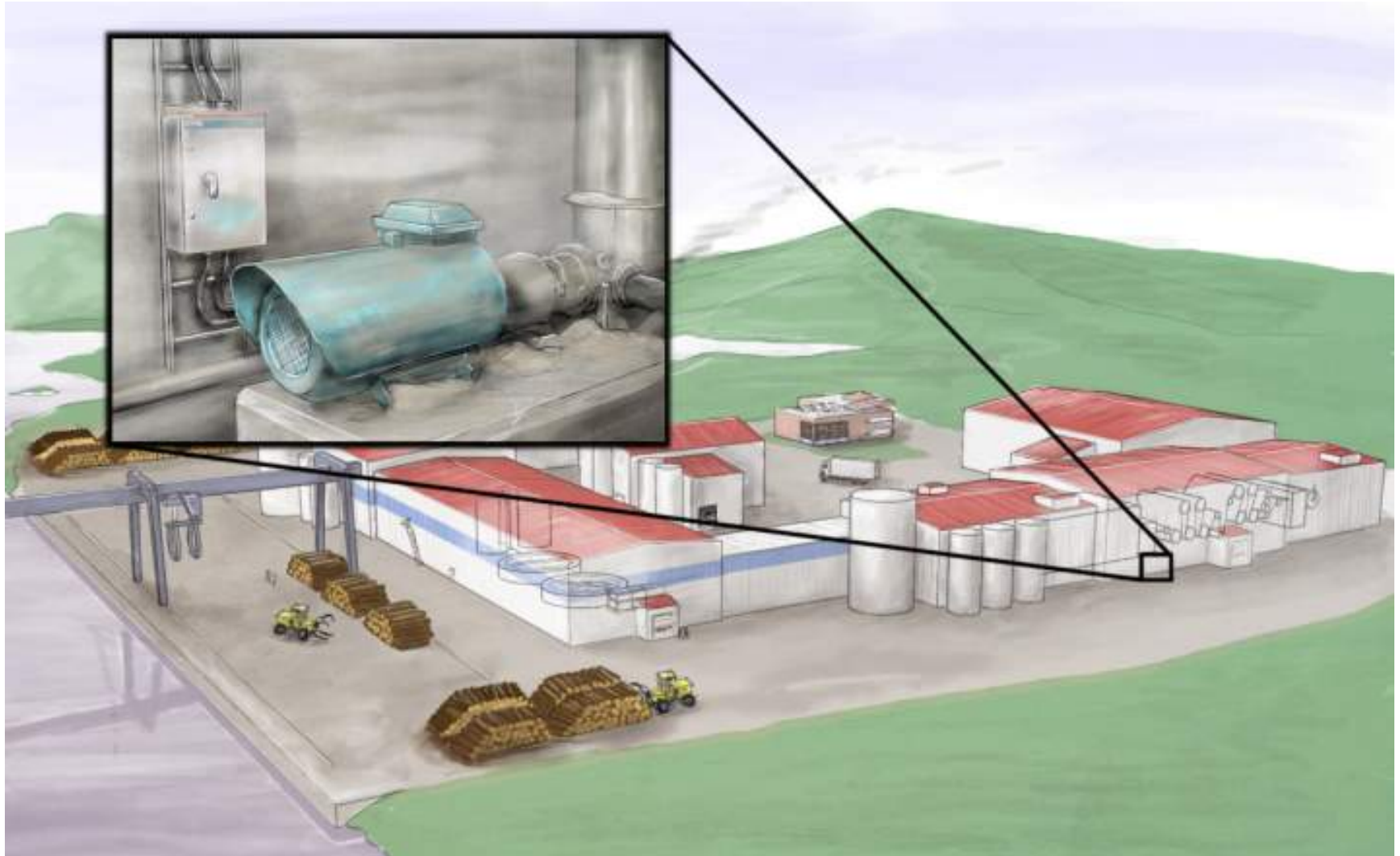
Example of industrial application



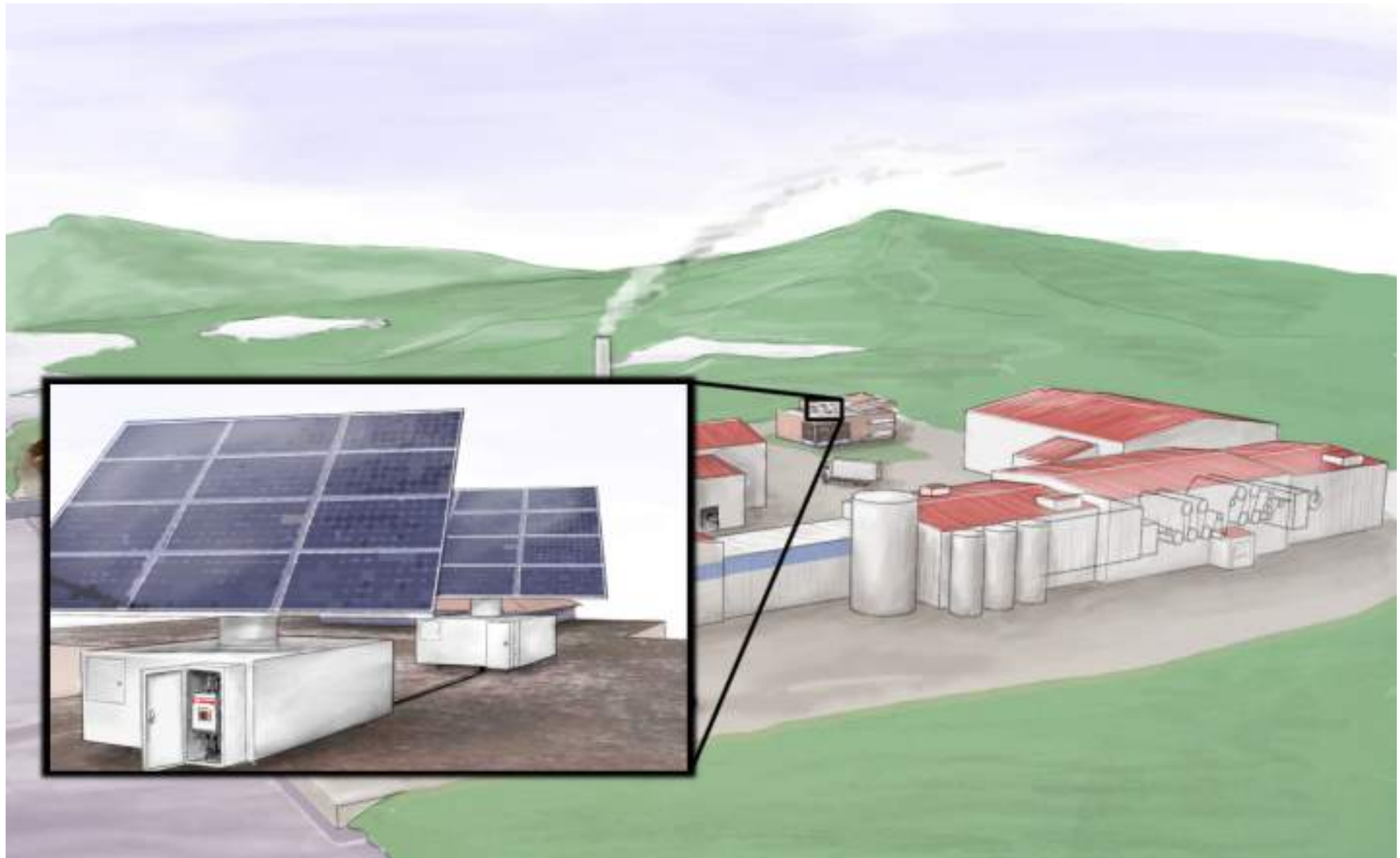
Example of industrial application



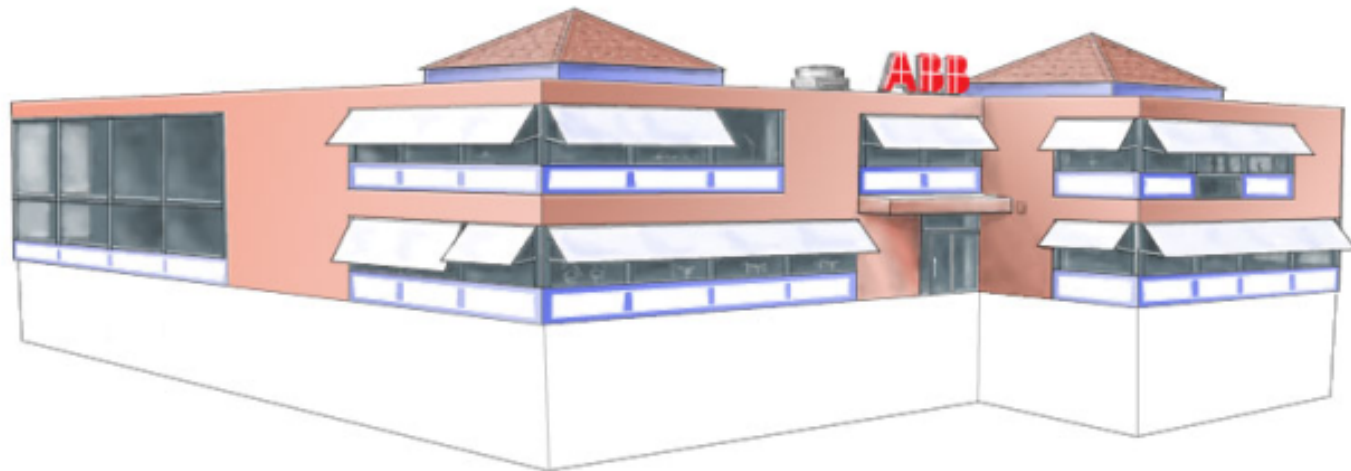
Example of industrial application



Example of solar application

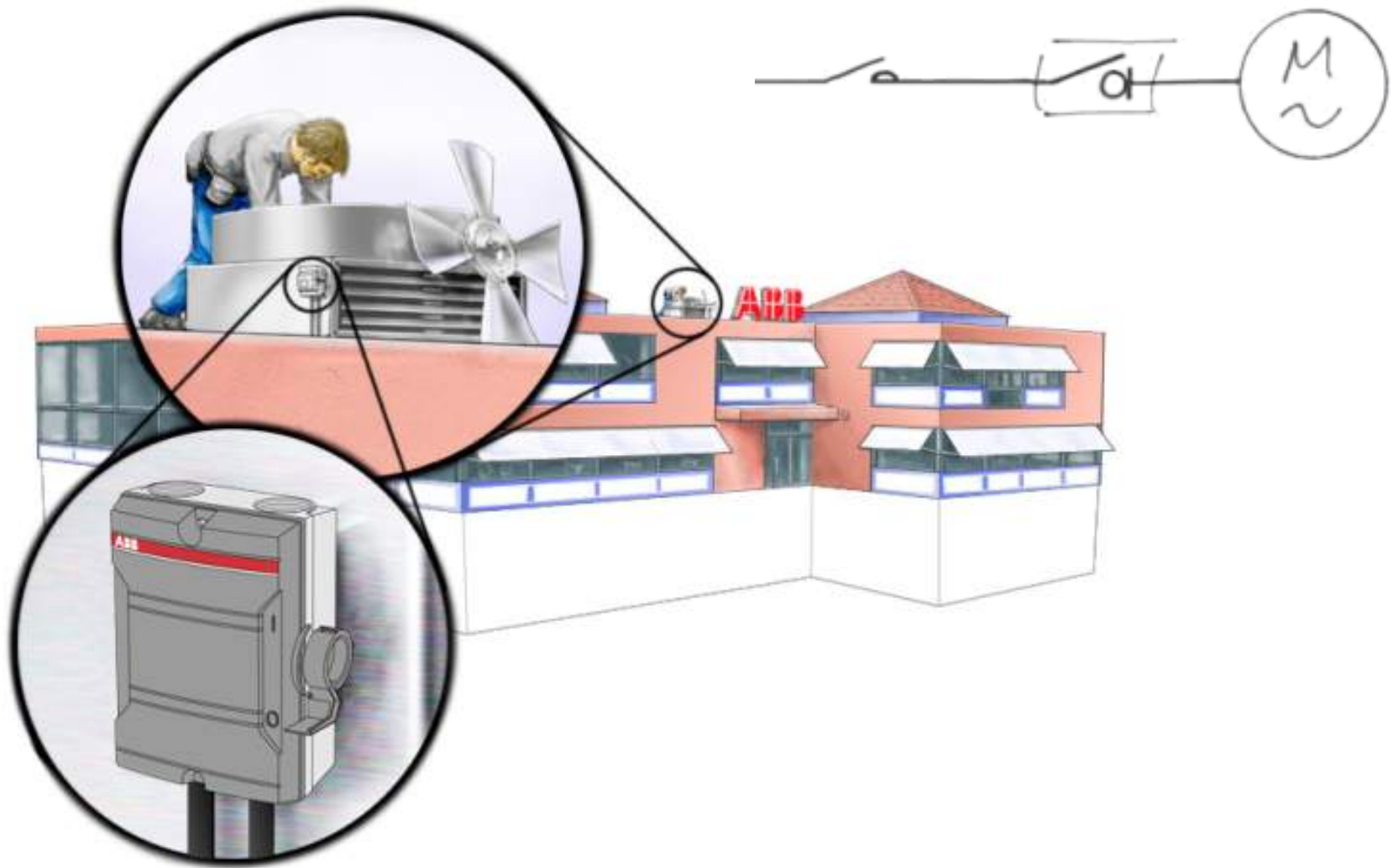


Example of application



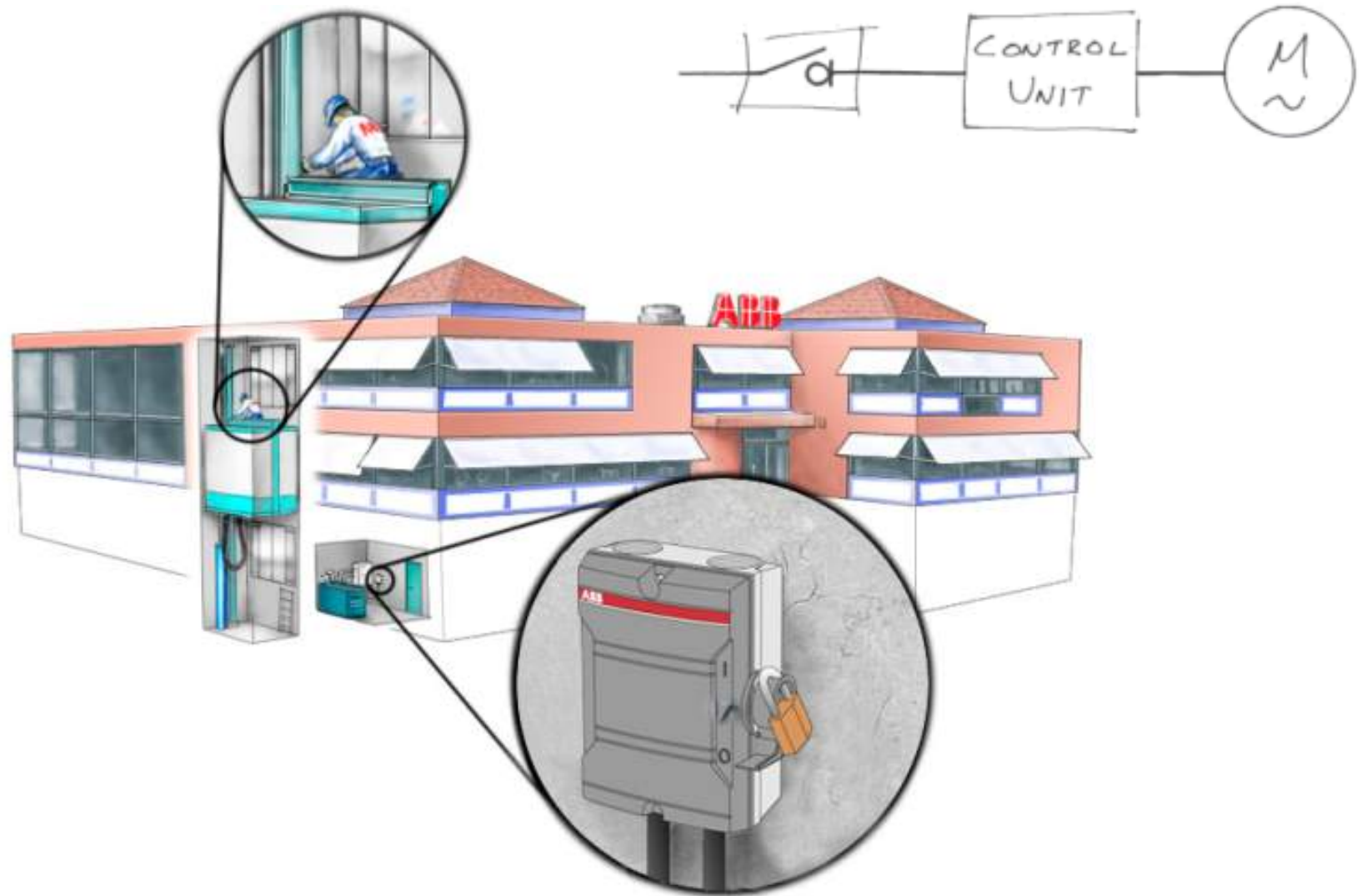
Example of application

Local isolation



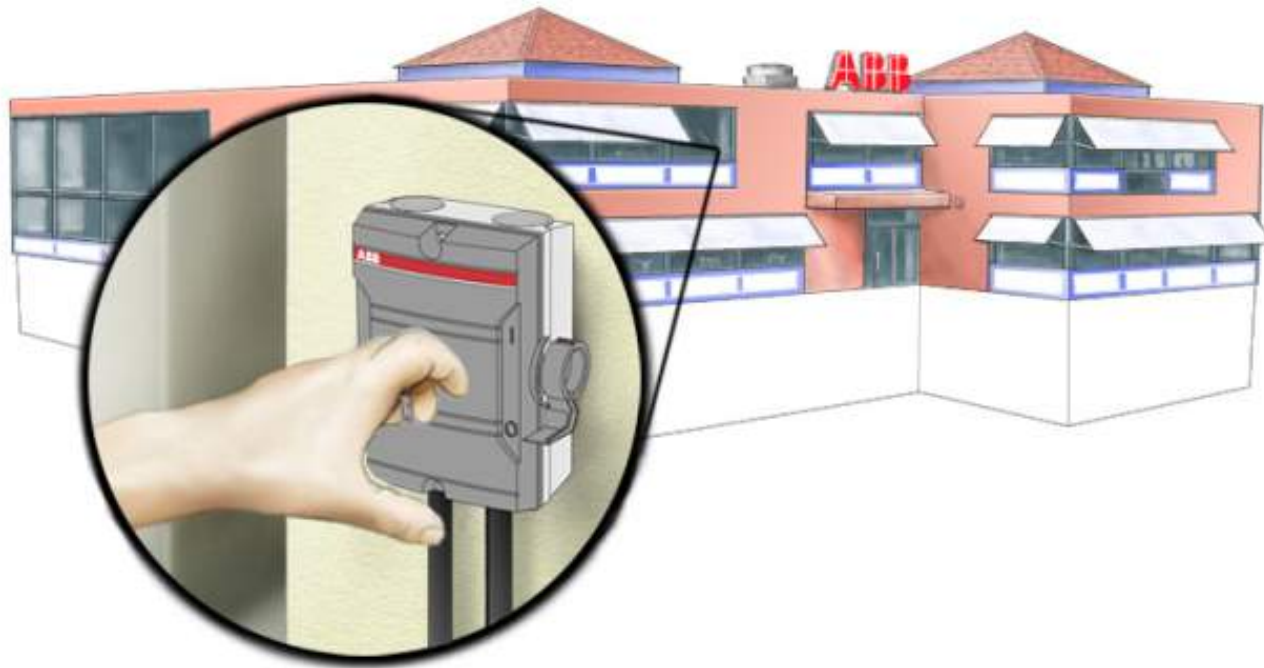
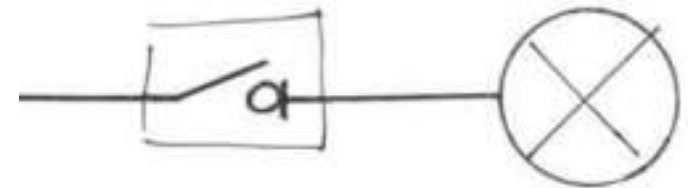
Example of application

Main switch

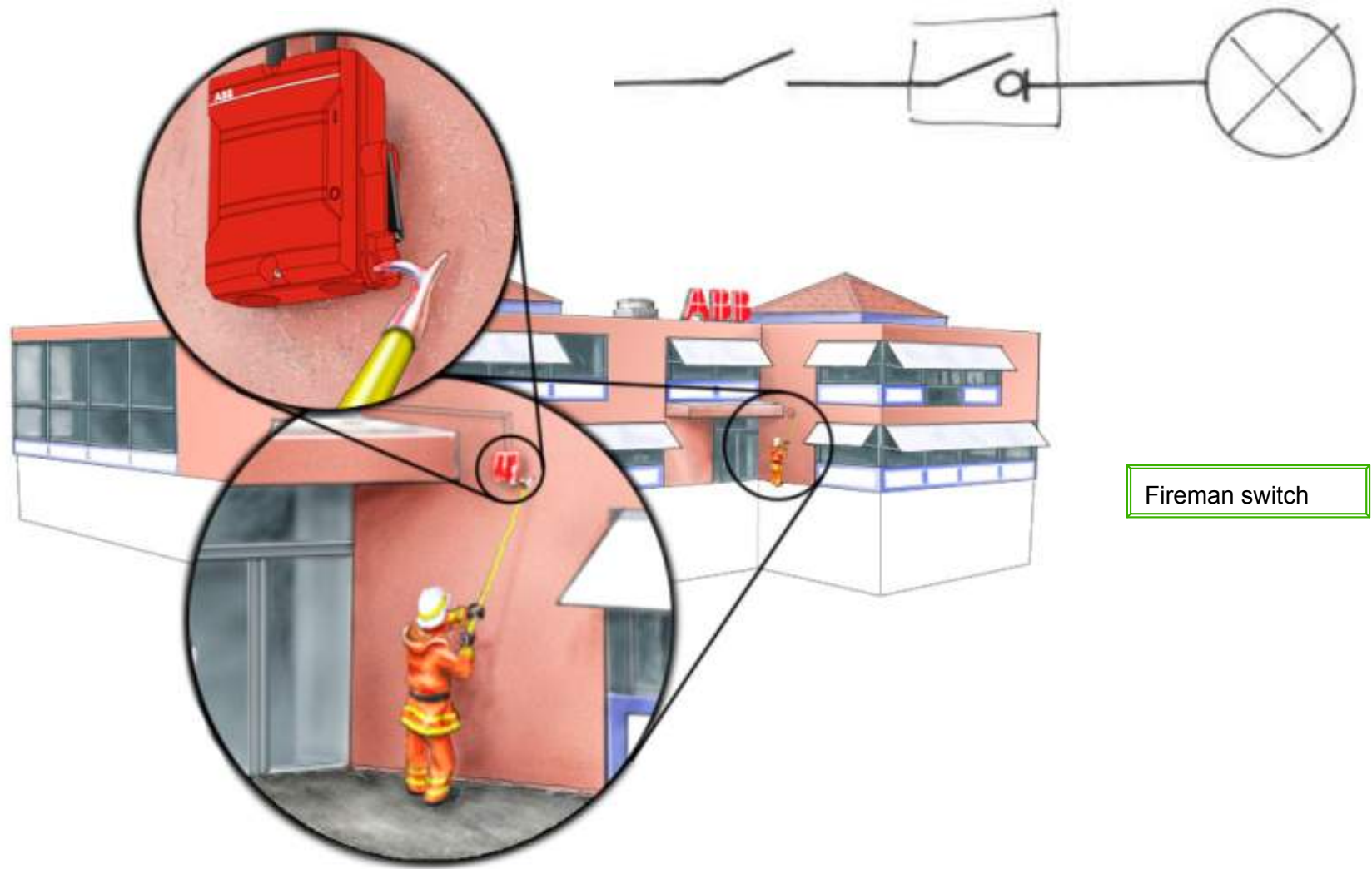


Example of application

Control switch



Example of application Fireman switch



Ratings to utilization categories

Enclosed switch-disconnectors



- AC-21A
- AC-22A
- AC-23A

Utilization categories AC

Utilization categories DC

The complete range Switch disconnectors / Isolators

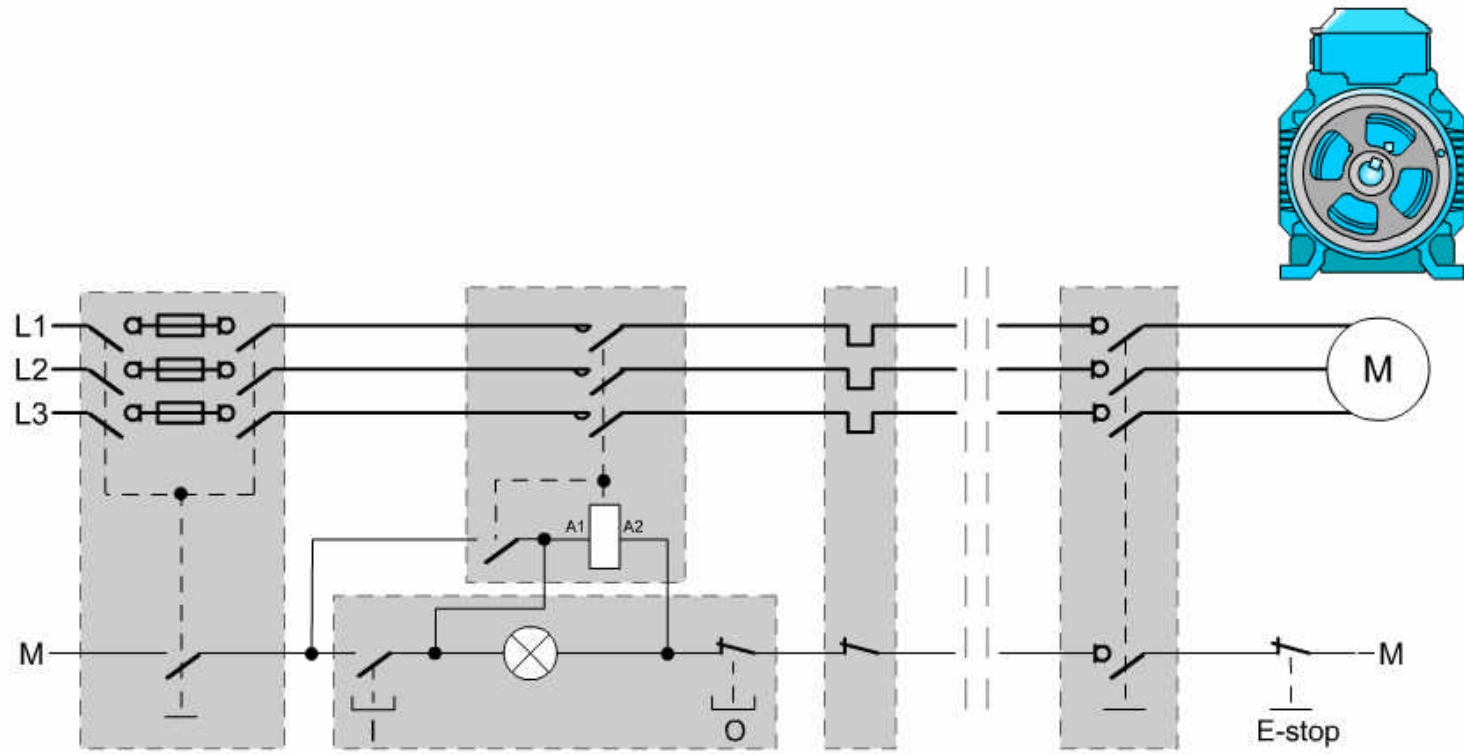
EN 60947-3, Ue 400 V					
Ie AC-21, 22A	Ie AC-23A	Plastic	Aluminum	Steel sheet	Stainless sheet
25	16	BW,OTP	KSE	OTL, OT	OTR
40	32	BW,OTP	KSE	OTL, OT	OTR
63	45	OTP	KSE	OTL, OT	OTR
80	75	OTP	KSE	OTL, OT	OTR
100	80	OTP	KSE	OTL, OT	OTR
125	90	OTP		OTL, OT	OTR
160	125	OT	KSE	OT	OT
270	250	OT	KSE	OT	OT
315	315	OT	KSE	OT	OT
500	500	OT	KSE	OT	OT
630	630	OT	KSE	OT	OT
720	720	OT		OT	OT
1000	800	OT		OT	OT
1250	1000			OT	OT
1600	1250			OT	

Wide range of functions

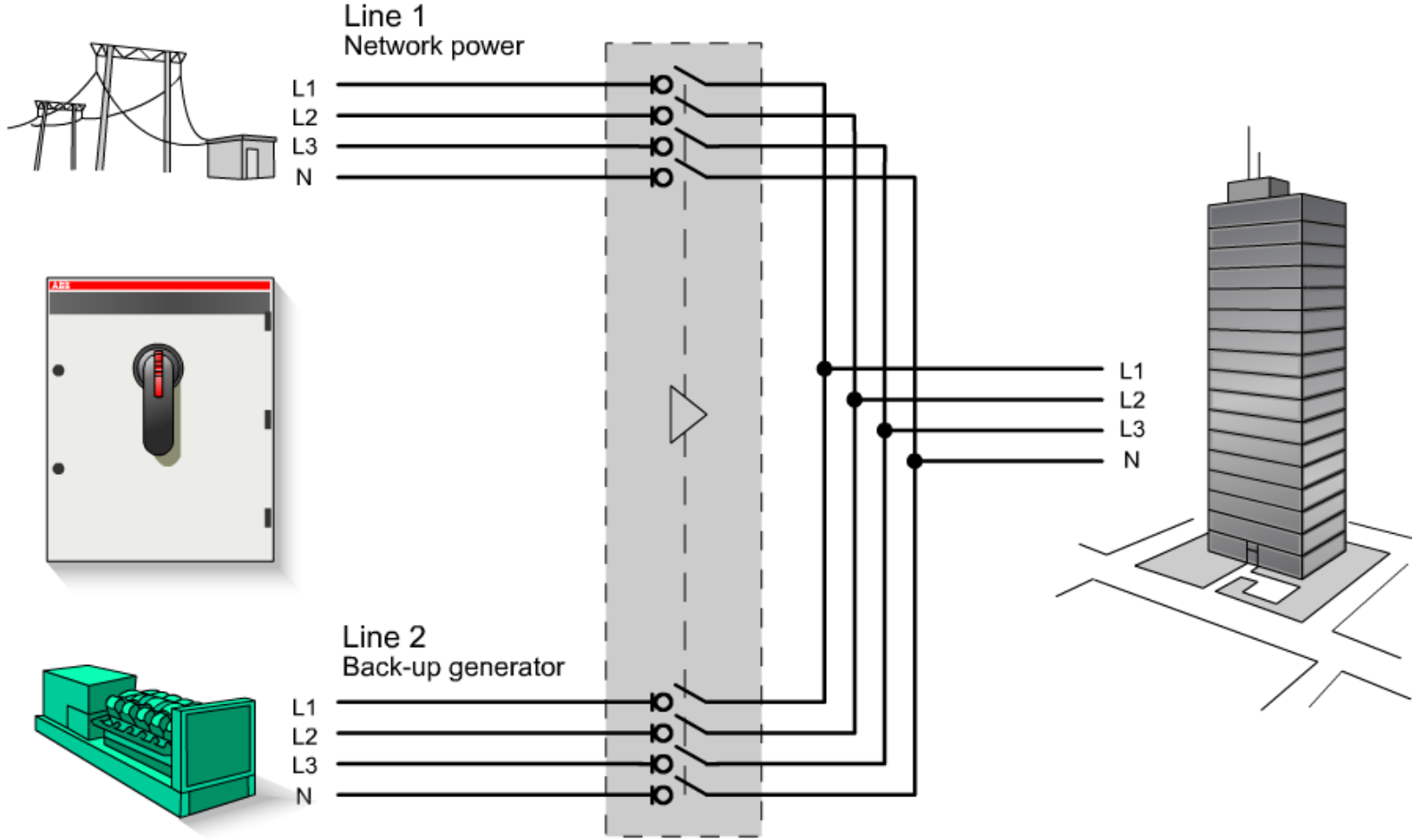


- 2, 3, 4 and 6 pole
- Auxiliary blocks
 - Early brake and late make auxiliary contact for electrical interlocking
 - All enclosed switches can be fitted with additional contact blocks.

“Early brake, late make”



Enclosed change-over switch



For safety and reliability

Front operated



High quality enclosure material

- Plastic
- Steel
- Aluminum
- Stainless steel AISI 304
- Acid proof steel AISI 316
- AC-22A = $\leq 1600A$
- AC-23A = $\leq 1250A$

For safety and reliability

Side operated



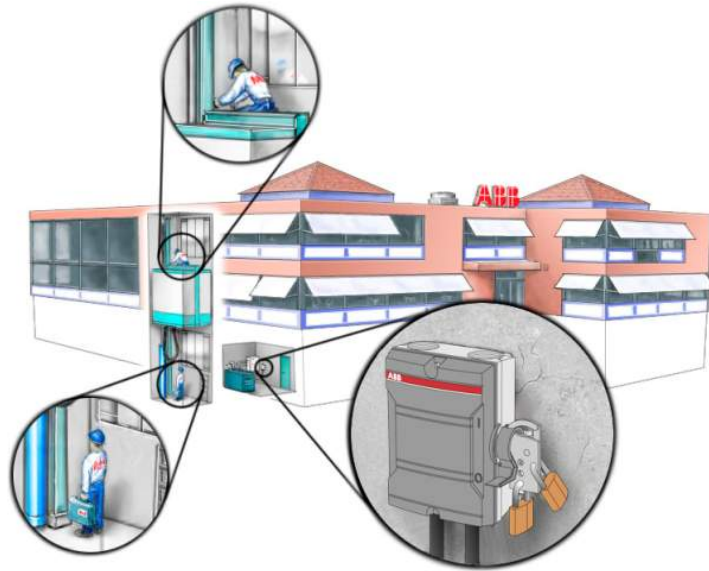
- Handle, axis & insert is one system, factory assembled by ABB
- Knockouts for padlock in “I” position
- AC-22A = < 40A
- AC-23A = < 25A

High quality enclosure material

- Aluminum
- Plastic/PBT

Properties of
plastic material

For safety and reliability



- Padlockable in the Off position as standard
- Shackle for up to 6 padlocks

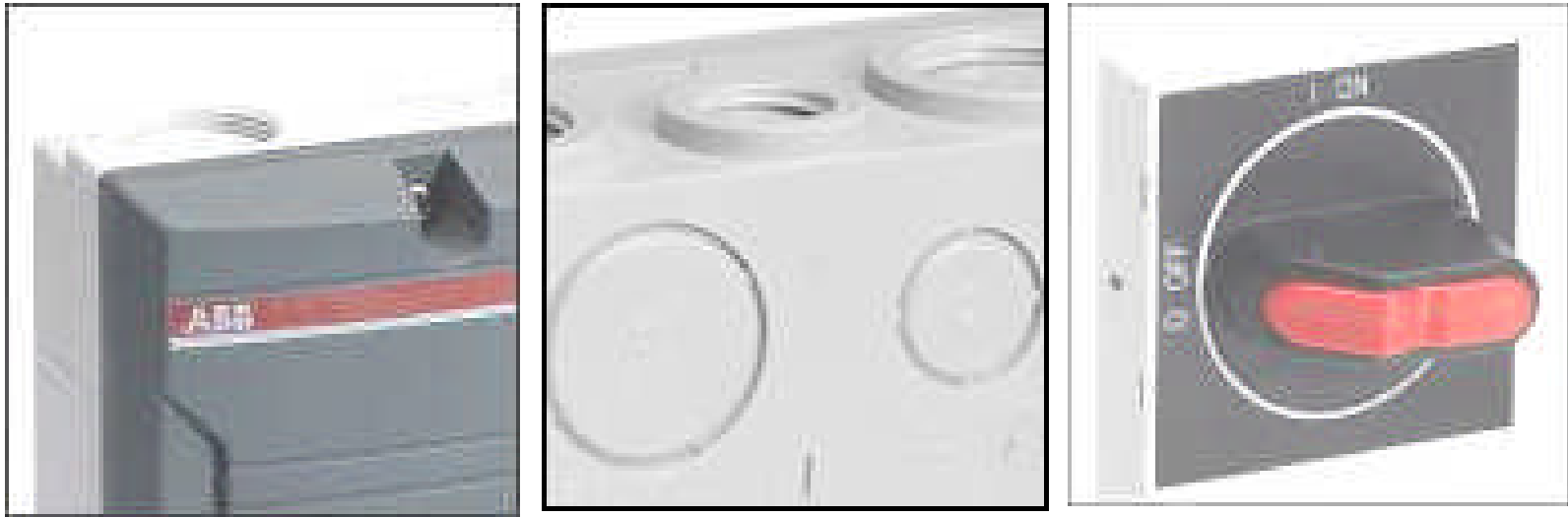
For safety and reliability



To prevent personal injury in case of short circuit when operating the switch

- On all aluminum enclosures with $I_e > 160 \text{ A}$
- On all steel sheet enclosures with $I_e > 125 \text{ A}$

For the user



Easy installation

- Clear marking of ratings
- Threaded cable entries
- Knockouts on plastic enclosures
- Drilling plan on the backside

Clear molded position indication (I-O)

Approvals and certificates

INTERNATIONAL ELECTROTECHNICAL COMMISSION (IEC) COMMISSION INTERNATIONALE D'ÉLECTROTECHNIQUE (CIE)

IEC SYSTEM FOR CONFORMITY TESTING AND CERTIFICATION OF ELECTRICAL EQUIPMENT (IECEE) CB SCHEME

SISTÈME COOPÉRÉ DE CERTIFICATION ET DE CERTIFICATION DES ÉQUIPEMENTS ÉLECTRIQUES (CIECE) RÉGIME CB

CB-42106A1

CB TEST CERTIFICATE CERTIFICAT D'ESSAI OC

Product Name:
ABB Automation Technologies AB
Drive Control, Robotapptaget 3, 811 28 Västerås
S00220

Name and address of the manufacturer:
ABB Automation Technologies AB
Drive Control, Robotapptaget 3, 811 28 Västerås
S00220
Svevia AB (Manufacturer)

Name and address of the factory:
ABB Automation Technologies AB
Drive Control, Robotapptaget 3, 811 28 Västerås
S00220

Name and address of the importer:
ABB Automation Technologies AB
Drive Control, Robotapptaget 3, 811 28 Västerås
S00220

Trade mark (brand):
ABB

Manufacturer Ref. No.:
S00220

Additional information of assessment:
This certificate implies CB certificate S0042100. ATEX values have been added to the appendix.

A sample of the product was tested and found to be in conformity with the applicable standards in accordance with the conditions of the certificate.

As shown in the Test Report Ref. No. S0042100, the product was found to be in conformity with the applicable standards in accordance with the conditions of the certificate.

This CB Test Certificate is issued by the relevant Certification Body in accordance with the applicable rules of the CB Scheme.

ABB
13 November 2009
Jean Louis Jourd'heuil
ABB S0042100

ABB Automation Technologies AB
ABB Automation Technologies AB
ABB Automation Technologies AB
ABB Automation Technologies AB

ABB
ABB Automation Technologies AB
ABB Automation Technologies AB
ABB Automation Technologies AB

- Standards EN 60947-3
- UL
- ATEX
- EMC
- Environment declaration
- CE declaration of conformity

Technical documentation Available on Internet and in ABB Library



- Dimension drawings and drilling plans
- Selection tool
- Circuit diagrams
- Operating instructions
- Approvals/certificates
- Printed materials/sales documentation

For more information please visit :

www.abb.com

www.switchselector.com

ABB – Your local partner globally



- Complete range of products
- Availability all around the world
- Local sales companies in over 130 countries

Conclusion...

A safe solution



- For a wide range of applications
- Designed for safe and easy use
- Corresponding to international standards

Power and productivity
for a better world™

