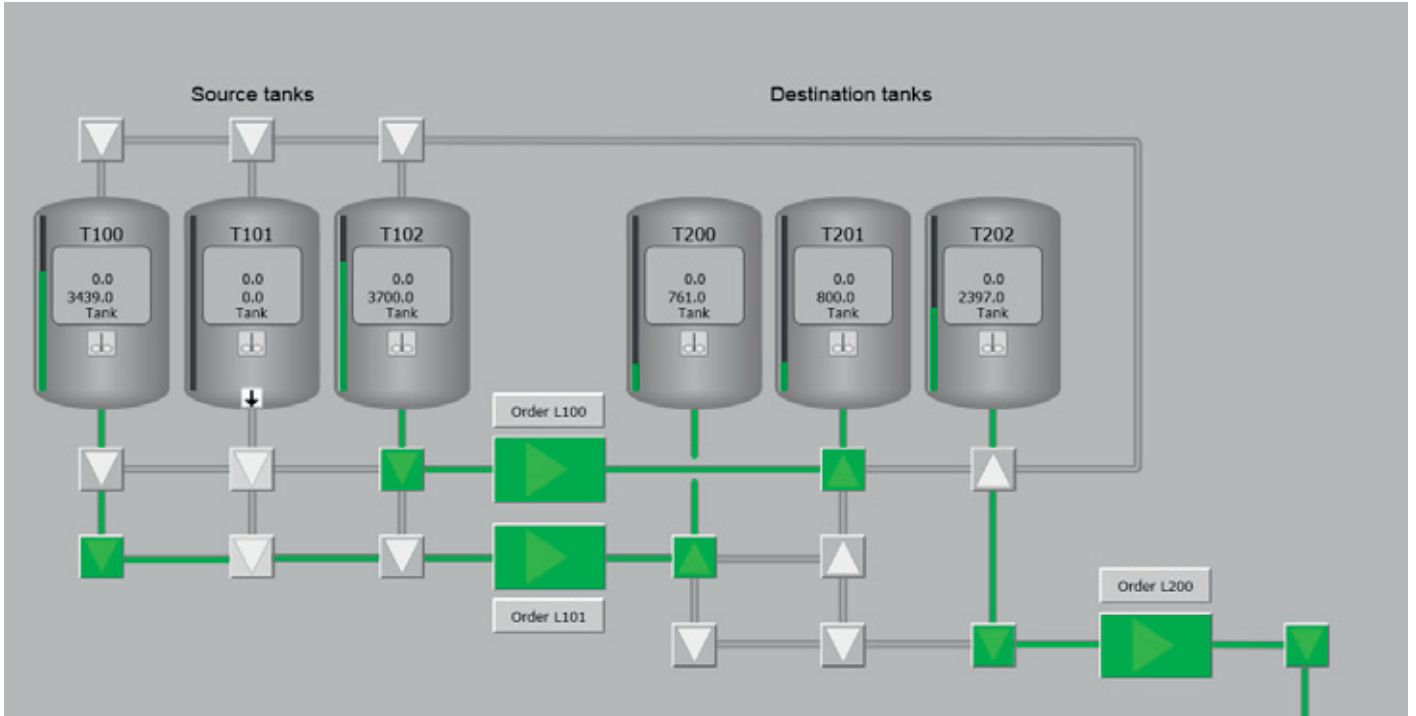


ProBase library



Tank Farm example with active transfers and faceplates

ProBase is a complete automation solution for System 800xA and can be used in any process where products are transported, stored or processed in tanks and lines like dairies, tank farms, chemical and pharmaceutical plants etc

ProBase includes functionality for advanced product transfer between process units like tanks and lines. The product transfer, called routing, includes all functionality for alarm handling and alarm propagation between different units, queue handling for online production changes, control and supervision of process objects, interlocks and transfer of product and equipment settings like product codes, unit names and unit states.

ProBase contains all required functionality to handle and engineer a cost effective CIP for industries like dairy and includes CIP recipe handling and template objects for CIP lines, CIP circuits and CIP objects.

Food and Beverage demo with production and CIP running

ProBase includes process objects like motors, valves and signals as well as complete area process units as template objects. The functionality in ProBase objects is described in online help and can be accessed from any faceplate and guides the operator how to operate the different ProBase objects.

ProBase benefits

- Based on System 800xA extended automation platform
- An extensive industry library of ready-made objects for the
 - food and beverage industry
 - Scalable to fit any needs
 - Future-safe – can be upgraded or extended as needed
- Easy to use and operate
- Recipe-based CIP editor for optimal use of detergents and excellent cleaning accuracy
- Prepared for track and trace
- Real-time data acquisition for preventive maintenance and asset optimization

For more information please contact your Channel Manager at ABB or any of the regional offices:

ABB AB

Control Technologies

Malmö, Sweden

Phone: +46 (0) 40 - 55 00 00

Fax: +46 (0) 40 - 55 00 01

E-Mail: processautomation@se.abb.com

www.abb.com/food&beverage

ABB AB

Control Technologies

Västerås, Sweden

Phone: +46 (0) 21 32 50 00

Fax: +46 (0) 21 13 78 45

E-Mail: processautomation@se.abb.com

www.abb.com/controlsystems

ABB Inc.

Control Technologies

Wickliffe, Ohio, USA

Phone: +1 440 585 8500

Fax: +1 440 585 8756

E-Mail: industrialitsolutions@us.abb.com

www.abb.com/controlsystems

ABB Pte Ltd

Control Technologies

Singapore

Phone: +65 6776 5711

Fax: +65 6778 0222

E-Mail: processautomation@sg.abb.com

www.abb.com/controlsystems

ABB Automation GmbH

Control Technologies

Mannheim, Germany

Phone: +49 1805 26 67 76

Fax: +49 1805 77 63 29

E-Mail: marketing.control-products@de.abb.com

www.abb.de/controlsystems

ABB Automation LLC

Control Technologies

Abu Dhabi, United Arab Emirates

Phone: +971 (0) 2 4938 000

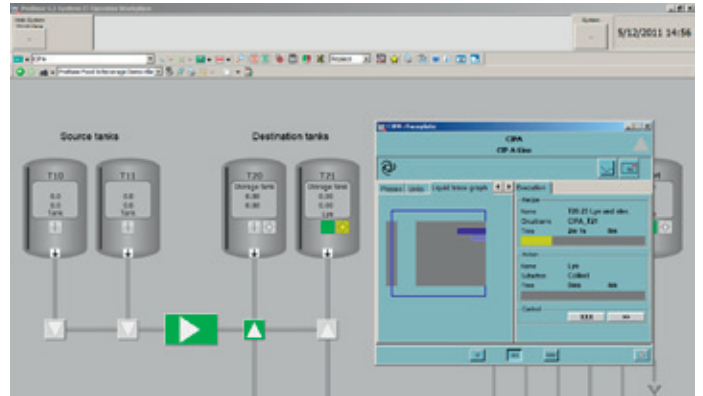
Fax: +971 (0) 2 5570 145

E-Mail: processautomation@ae.abb.com

www.abb.com/controlsystems

Tank Farm demo with active transfers and faceplates

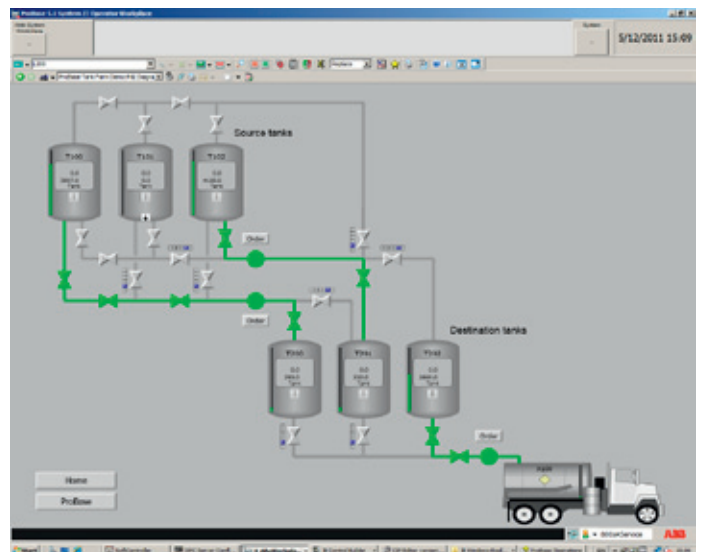
ProBase utilizes System 800xA standard functionality for history, trends and events. ProBase is also prepared for more advanced user specific requirements like batch, production data log, product tracing etc.



Online Help for CIP Line

ProBase also defines a methodology of how to execute a project within the System 800xA platform. By combining this methodology with the template objects the engineering time in the project is significantly reduced while maintaining high quality in the project. The System 800xA standard bulk data tools and the tailored ProBase bulk data tools increase the engineering efficiency further.

Two ProBase demos show one typical dairy & beverage application and one tank farm application.



Tank Farm example with active transfers and faceplates