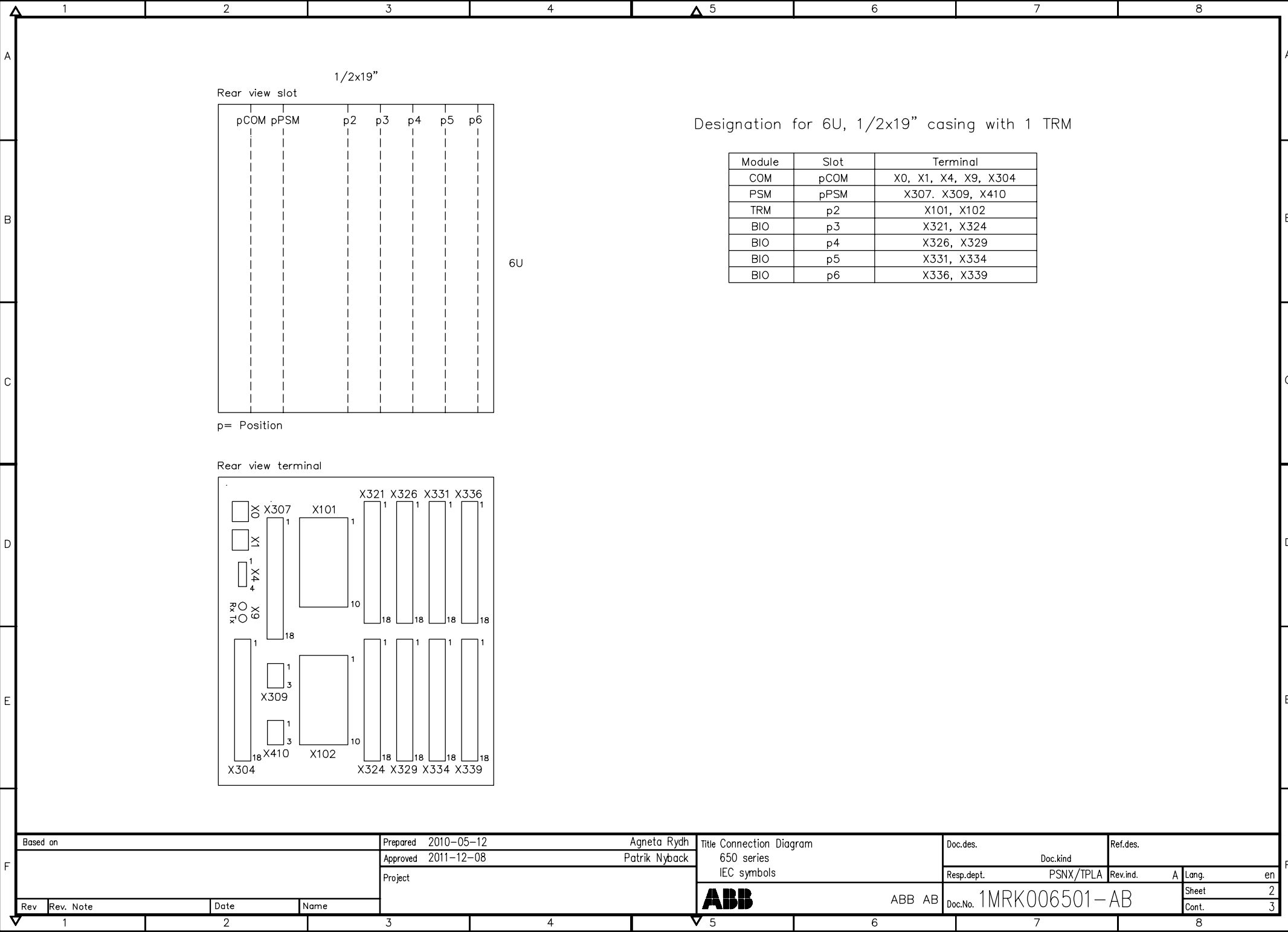


Table of contents

Part of product	Sheet
Designation for 6U, 1/2x19" casing with 1 TRM slot	2
Designation for 6U, 1/2x19" casing with 1 TRM slot and 1 AIM slot	3
Communication module (COM)	4
Power supply module 48–125 VDC (PSM)	5
Power supply module 110–250 VDC, 100–240 VAC (PSM)	6
Transformer module (TRM)	7
Analog input module (AIM)	8
Binary input/output module (BIO)	9

Based on		Prepared 2010-05-12	Agneta Rydh	Title Connection Diagram 650 series IEC symbols	Doc.des.	Ref.des.	
		Approved 2011-12-08	Patrik Nyback		Doc.kind	Lang.	en
		Project		Resp.dept.	PSNX/TPLA	Rev.ind.	A
Rev	Rev. Note	Date	Name	ABB	ABB AB	Doc.No. 1MRK006501-AB	
1		2				Sheet	1
						Cont.	2

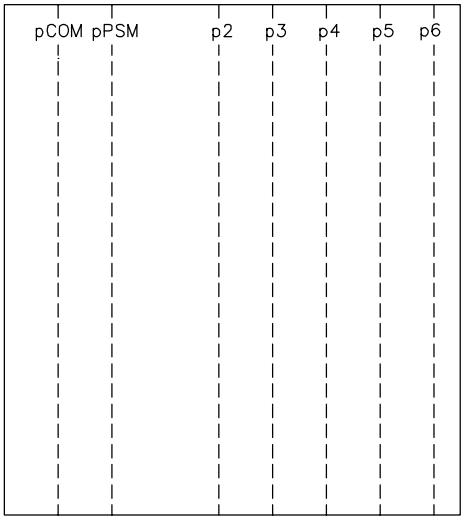
We reserve all rights in this document and in the information contained therein. Reproduction, use or disclosure to third parties without express authority is strictly forbidden. Copr. ABB AB



Designation for 6U, 1/2x19" casing with 1 TRM

Module	Slot	Terminal
COM	pCOM	X0, X1, X4, X9, X304
PSM	pPSM	X307, X309, X410
TRM	p2	X101, X102
BIO	p3	X321, X324
BIO	p4	X326, X329
BIO	p5	X331, X334
BIO	p6	X336, X339

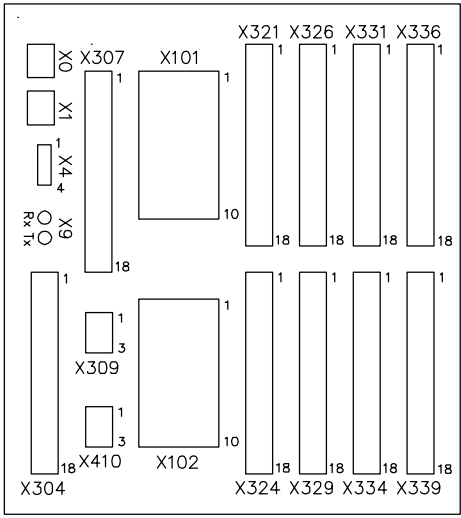
Rear view slot



6U

p= Position

Rear view terminal



Based on		Prepared 2010-05-12	Agneta Rydh	Title Connection Diagram		Doc.des.	Ref.des.	
		Approved 2011-12-08	Patrik Nyback	650 series IEC symbols		Doc.kind		
		Project			Resp.dept. PSNX/TPLA		Rev.ind. A	Lang. en
Rev	Rev. Note	Date	Name	ABB ABB AB		Doc.No. 1MRK006501-AB		Sheet 2
1		2						Cont. 3

We reserve all rights in this document and in the information contained therein. Reproduction, use or disclosure to third parties without express authority is strictly forbidden. Copr. ABB AB

1 2 3 4 5 6 7 8

A

B

C

D

E

F

A

B

C

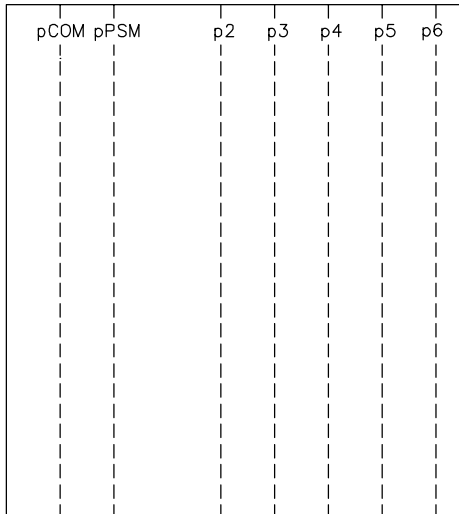
D

E

F

1/2x19"

Rear view slot



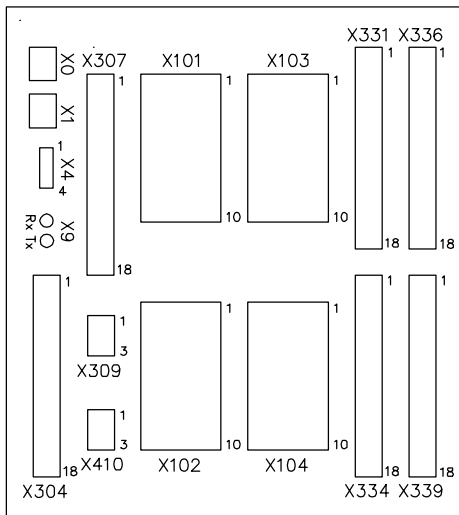
6U

Designation for 6U, 1/2x19" casing with 1 TRM and 1 AIM

Module	Slot	Terminal
COM	pCOM	X0, X1, X4, X9, X304
PSM	pPSM	X307, X309, X410
TRM	p2	X101, X102
AIM	p4	X103, X104
BIO	p5	X331, X334
BIO	p6	X336, X339

p= Position

Rear view terminal

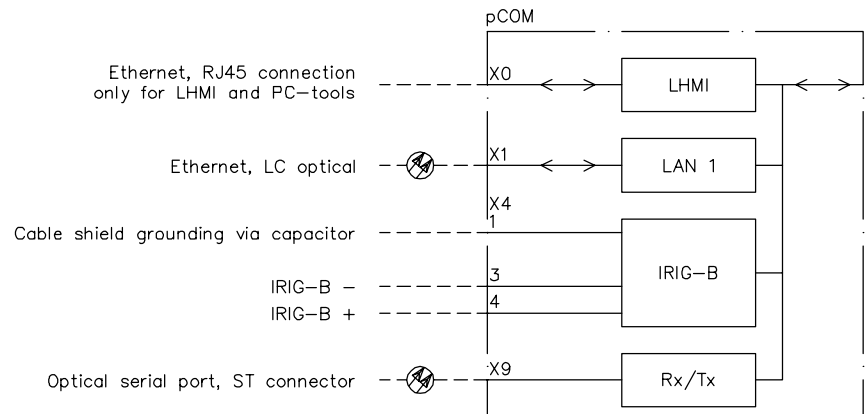


Based on		Prepared 2010-05-17		Agneta Rydh		Title Connection Diagram		Doc.des.		Ref.des.	
		Approved 2011-12-08		Patrik Nyback		650 series IEC symbols		Doc.kind			
		Project				Resp.dept. PSNX/TPLA		Rev.ind. A		Lang. en	
Rev	Rev. Note	Date	Name	ABB		ABB AB		Doc.No. 1MRK006501-AB		Sheet 3	
1		2								Cont. 4	

1 2 3 4 5 6 7 8

We reserve all rights in this document and in the information contained therein. Reproduction, use or disclosure to third parties without express authority is strictly forbidden. Copr. ABB AB

Communication module (COM)



X304		CONFIGURATION
1	C1-4	
+ 2	BI01	//
+ 3	BI02	//
+ 4	BI03	//
+ 5	BI04	//
6	C5-8	
+ 7	BI05	//
+ 8	BI06	//
+ 9	BI07	//
+ 10	BI08	//
11	C9-11	
+ 12	BI09	//
+ 13	BI10	//
+ 14	BI11	//
15	C12-14	
+ 16	BI12	//
+ 17	BI13	//
+ 18	BI14	//



Observe polarity sequence of RL connectors

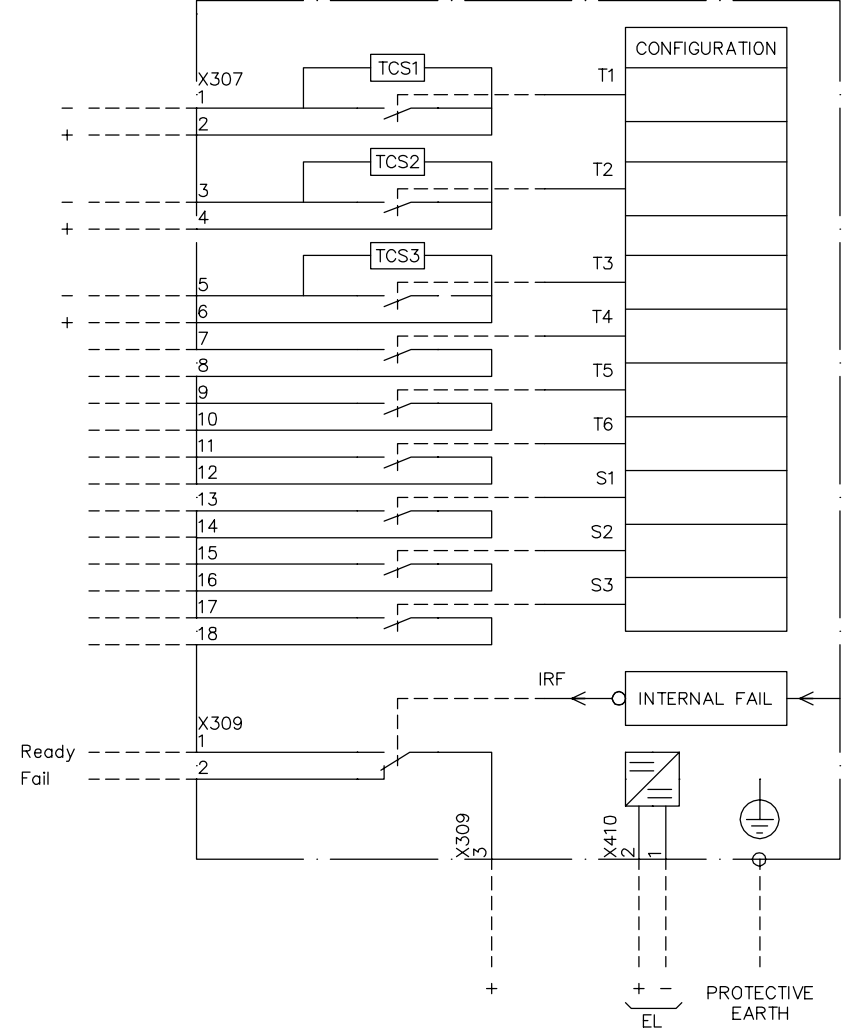
RL

Based on		Prepared 2010-05-12	Agneta Rydh	Title Connection Diagram		Doc.des.	Ref.des.	
		Approved 2011-12-08	Patrik Nyback	650 series		Doc.kind		
		Project		IEC symbols		Resp.dept.	PSNX/TPLA	Rev.ind. A
								Lang. en
Rev	Rev. Note	Date	Name	ABB		Doc.No. 1MRK006501-AB		Sheet 4
1		2						Cont. 5

We reserve all rights in this document and in the information contained therein. Reproduction, use or disclosure to third parties without express authority is strictly forbidden. Copr. ABB AB

Power supply module 48–125 VDC (PSM)

pPSM



Observe polarity sequence

Based on		Prepared 2010-05-12		Agneta Rydh		Title Connection Diagram		Doc.des.		Ref.des.	
		Approved 2011-12-08		Patrik Nyback		650 series		Doc.kind			
		Project				IEC symbols		Resp.dept. PSNX/TPLA		Rev.ind. A	
										Lang. en	
										Sheet 5	
										Cont. 6	



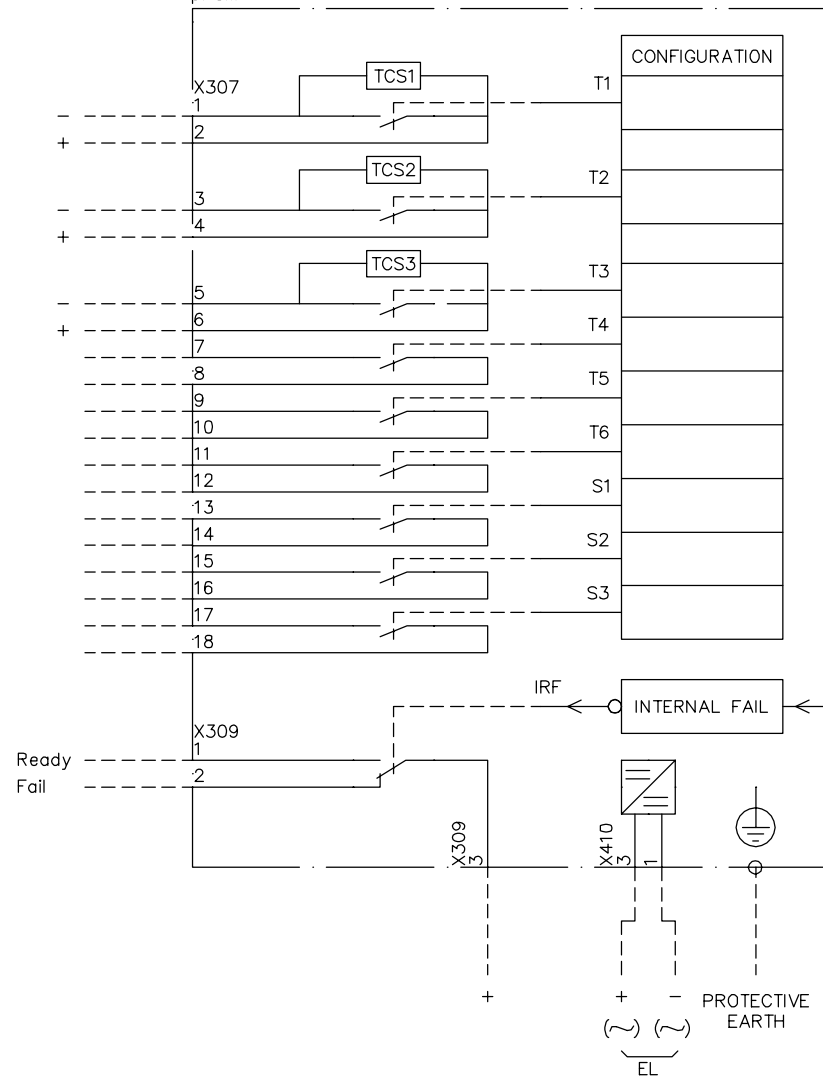
ABB AB

Doc.No. 1MRK006501-AB

We reserve all rights in this document and in the information contained therein. Reproduction, use or disclosure to third parties without express authority is strictly forbidden. Copr. ABB AB

Power supply module 110–250 VDC, 100–240 VAC (PSM)

pPSM

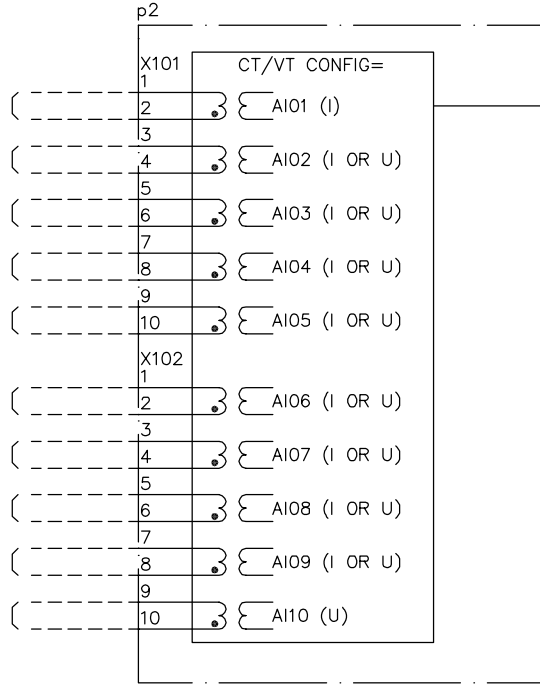


Observe polarity sequence

Based on		Prepared 2010-05-12	Agneta Rydh	Title Connection Diagram		Doc.des.	Ref.des.	
		Approved 2011-12-08	Patrik Nyback	650 series		Doc.kind		
		Project		IEC symbols		Resp.dept.	PSNX/TPLA	Rev.ind. A
				ABB		Doc.No. 1MRK006501-AB		Lang. en
Rev	Rev. Note	Date	Name			ABB AB		
1		2						Cont. 7

We reserve all rights in this document and in the information contained therein. Reproduction, use or disclosure to third parties without express authority is strictly forbidden. Copr. ABB AB

Transformer module (TRM)



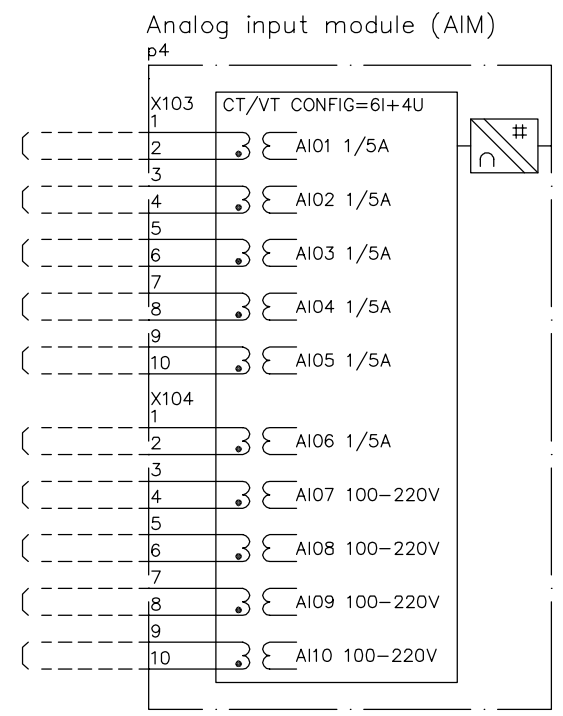
Designation corresponding to Transformer module			
CT/VT input designation	Current/voltage configuration		
	6I+4U	8I+2U	4I+1I+5U
AI01	1/5A	1/5A	1/5A
AI02	1/5A	1/5A	1/5A
AI03	1/5A	1/5A	1/5A
AI04	1/5A	1/5A	1/5A
AI05	1/5A	1/5A	0.1/0.5A
AI06	1/5A	1/5A	100-220V
AI07	100-220V	1/5A	100-220V
AI08	100-220V	1/5A	100-220V
AI09	100-220V	100-220V	100-220V
AI10	100-220V	100-220V	100-220V

Compression or ringlug terminals

- Indicates high polarity. Note that internal polarity can be adjusted by setting of analog input CT neutral direction and or on SMAI pre-processing function blocks.

Based on		Prepared 2010-05-12	Agneta Rydh	Title Connection Diagram		Doc.des.	Ref.des.	
		Approved 2011-12-08	Patrik Nyback	650 series		Doc.kind		
		Project		IEC symbols		Resp.dept.	PSNX/TPLA	Rev.ind. A
				ABB		ABB AB		Lang. en
Rev	Rev. Note	Date	Name			Doc.No. 1MRK006501-AB		Sheet 7
1		2						Cont. 8

We reserve all rights in this document and in the information contained therein. Reproduction, use or disclosure to third parties without express authority is strictly forbidden. Copr. ABB AB



Based on		Prepared 2010-05-12	Agneta Rydh	Title Connection Diagram 650 series IEC symbols		Doc.des.	Ref.des.	
		Approved 2011-12-08	Patrik Nyback			Doc.kind		
		Project		Resp.dept.	PSNX/TPLA	Rev.ind.	A	Lang. en
Rev	Rev. Note	Date	Name	ABB ABB AB		Doc.No. 1MRK006501-AB		Sheet 8
1		2						Cont.

